

£475,000

Tennyson Road

London, E15 4DJ

This attractive two double bedroom mid-terrace property offers approximately 607 sq ft of well-balanced living space, combining period charm with practical modern living.

The bay-fronted reception room provides an immediate sense of space and light, featuring high ceilings and a feature fireplace and leading to a spacious fully equipped kitchen, also features utility space next to downstairs bathroom

Upstairs, the property comprises two genuine double bedrooms, both bright and well-proportioned, making the home suitable for a range of buyers.

The private rear garden is designed for low maintenance, with a mix of paving and artificial lawn-ideal for relaxing or entertaining without the upkeep. Additional benefits include wooden flooring, gas central heating, and the advantage of being sold chain free.

A fantastic option for first-time buyers, investors, or those looking for a well-located London home with character and outdoor space.

Tenure: Freehold

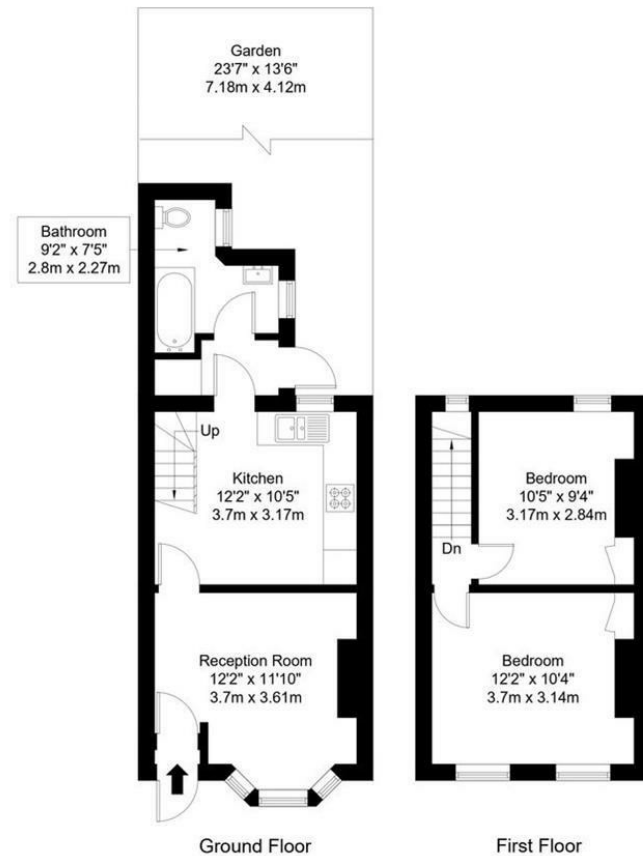
Council Tax: Band C





Tennyson Road, E15 4DJ

Approx Gross Internal Area = 55.9 sq m / 602 sq ft



Ref :

Copyright **BLEU PLAN**

The Floor plan is not to scale and measurements and areas shown are approximate and therefore should be used for illustrative purposes only. The plan has been prepared in accordance with the RICS code of Measuring Practice and whilst we have confidence in the information produced it must not be relied on. Maximum lengths and widths are represented on the floor plan. If there is any aspect of particular importance, you should carry out or commission your own inspection of the property.
Copyright © BleuPlan

Energy Efficiency Rating		Current	Potential
<i>Very energy efficient - lower running costs</i>			
(92 plus) A			89
(81-91) B			
(69-80) C			
(55-68) D		67	
(39-54) E			
(21-38) F			
(1-20) G			
<i>Not energy efficient - higher running costs</i>			
England & Wales		EU Directive 2002/91/EC	

Agents Note: Whilst every care has been taken to prepare these particulars, they are for guidance purposes only. All measurements are approximate and are for general guidance purposes only and whilst every care has been taken to ensure their accuracy, they should not be relied upon and potential buyers/tenants are advised to recheck the measurements

OFFICE ADDRESS
88 Cheshire Street
London
E2 6EH

OFFICE DETAILS
0207 739 6969
info@peachproperties.com
www.peachproperties.com