



**Connells**

Bisley Crescent  
Upper Cambourne



This four-bed detached home offers a warm, welcoming feel throughout, with a bright kitchen/diner and relaxing lounge. Upstairs brings four bedrooms, including master with ensuite, while outside a generous decked garden with artificial grass completes the picture.

#### Entrance Hall

Door to front, stairs to landing, tiled flooring, radiator.

#### Cloakroom

Window to rear, wash hand basin, WC, tiled splash back, tiled flooring, extractor fan, radiator.

#### Kitchen/Diner

Windows to front and rear, fitted kitchen with a range of wall and base units, complementary work surface, stainless steel sink with one and a half bowl and drainer, electric double oven, five burn gas hob, glass splash back, stainless steel cooker hood, integrated washing machine and fridge/freezer, plumbing for dishwasher, tiled flooring, french door to side, radiator.

#### Lounge

Window to rear, full length windows to front and side with shutters, under stairs cupboard, two radiators.

#### Landing

Window to rear, stairs to entrance hall, loft access, airing cupboard, radiator.



## Bedroom One

Two windows to front, three door built in wardrobe with slide mirrored doors , radiator.

## Ensuite

Windows to rear and side, double shower cubicle, wash hand basin, WC, shaver point, extractor fan, spot lights, tiled flooring, part tiled.

## Bedroom Two

Full length windows to front and side, radiator.

## Bedroom Three

Windows to front and side, radiator.

## Bedroom Four

Window to front, radiator.

## Bathroom

Window to rear, bath with mixer tap, shower over , glass screen, wash hand basin,WC, part tiled, extractor fan, tiled flooring, radiator.

## Rear Garden

Fence and wall enclosed, deck area, two patio area's, artificial lawn, planted borders, outside tap and light, gate to front.

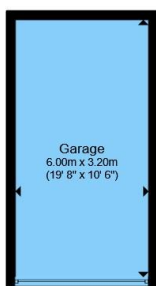
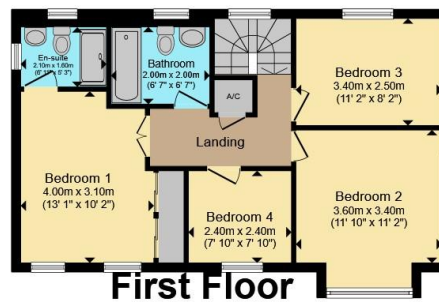
## Garage And Parking

Single garage with up and over door, light and power, two tandem parking spaces.









**Garage**

Total floor area 132.7 m<sup>2</sup> (1,428 sq.ft.) approx

This floor plan is for illustrative purposes only. It is not drawn to scale. Any measurements, floor areas (including any total floor area), openings and orientation are approximate. No details are guaranteed, they cannot be relied upon for any purpose and they do not form part of any agreement. No liability is taken for any error, omission or misstatement. A party must rely upon its own inspection(s). Powered by [www.propertybox.io](http://www.propertybox.io)



To view this property please contact Connells on

**T 01954 714900**  
**E [cambourne@connells.co.uk](mailto:cambourne@connells.co.uk)**

Unit 2 Caxton House Broad Street Great Cambourne  
 CAMBRIDGE CB23 6JN

EPC Rating: C Council Tax  
 Band: E

Tenure: Freehold

**view this property online [connells.co.uk/Property/CBN306123](http://connells.co.uk/Property/CBN306123)**



1. MONEY LAUNDERING REGULATIONS Intending purchasers will be asked to produce identification documentation at a later stage and we would ask for your co-operation in order that there will be no delay in agreeing the sale. 2. These particulars do not constitute part or all of an offer or contract. 3. The measurements indicated are supplied for guidance only and as such must be considered incorrect. Potential buyers are advised to recheck measurements before committing to any expense. 4. We have not tested any apparatus, equipment, fixtures, fittings or services and it is in the buyers interest to check the working condition of any appliances.

Connells Residential is registered in England and Wales under company number 1489613, Registered Office is Cumbria House, 16-20 Hockliffe Street, Leighton Buzzard, Bedfordshire, LU7 1GN. VAT Registration Number is 500 2481 05.

**See all our properties at [www.connells.co.uk](http://www.connells.co.uk) | [www.rightmove.co.uk](http://www.rightmove.co.uk) | [www.zoopla.co.uk](http://www.zoopla.co.uk)**

Property Ref: CBN306123 - 0006