



Guide Price

£240,000

Freehold

3x  1x  1x 

**Goldfinch Close,
Faversham, Kent, ME13**

OVER 60?

Secure this property
for up to **59% less!**

Wards
Helping you move forwards



Main features

- Modern property in cul de sac location
- Family orientated accommodation
- Close to Davington Primary School
- Lovely country and coastal walks nearby
- No onward chain

Accommodation

GROUND FLOOR

Entrance Porch
Hallway
Lounge/Diner: 15'8 x 10'10 (4.78m x 3.30m)
Kitchen: 15'2 x 9'5 (4.63m x 2.87m)

FIRST FLOOR

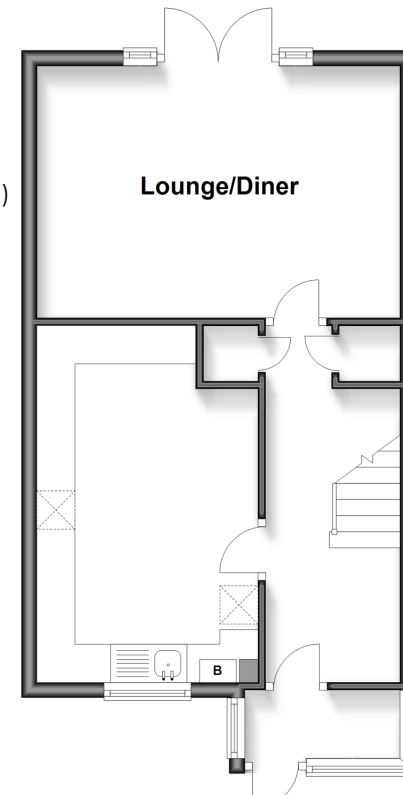
Landing
Bedroom 1: 12'9 x 8'6 (3.89m x 2.59m)
Bedroom 2: 9'8 x 6'10 (2.95m x 2.08m)
Bedroom 3: 8'5 x 6'8 (2.57m x 2.03m)
Office/Nursery: 9'5 x 4'10 (2.87m x 1.47m)
Bathroom
Separate Toilet

OUTSIDE

Front Garden
Rear Garden

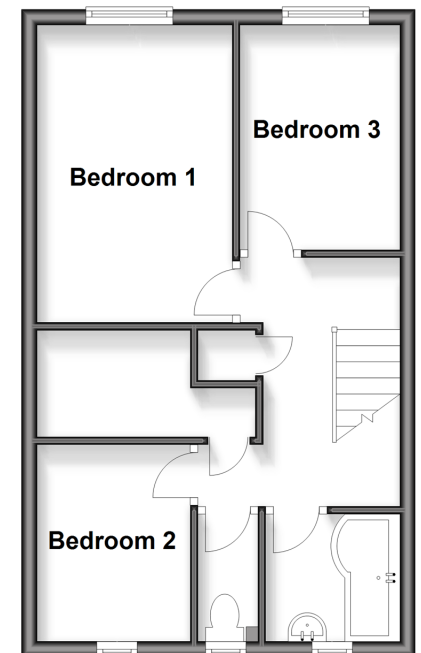
Ground Floor

Approx. 40.3 sq. metres (434.1 sq. feet)



First Floor

Approx. 38.4 sq. metres (413.0 sq. feet)



Call Faversham - 01795 535517 ■ wardsofkent.co.uk

- Legal advice should be taken to verify fixtures/fittings, planning, alterations and/or lease details
- Appliances & services are untested, dimensions are approximate and floor plans are not to scale
- Through a Homewise Home For Life Plan people aged 60+ can secure this property for up to 50% less, by purchasing a Lifetime Lease.



10828479/20251124/JB/PJ