



Cromwell Crescent, SW5

£576 Per week

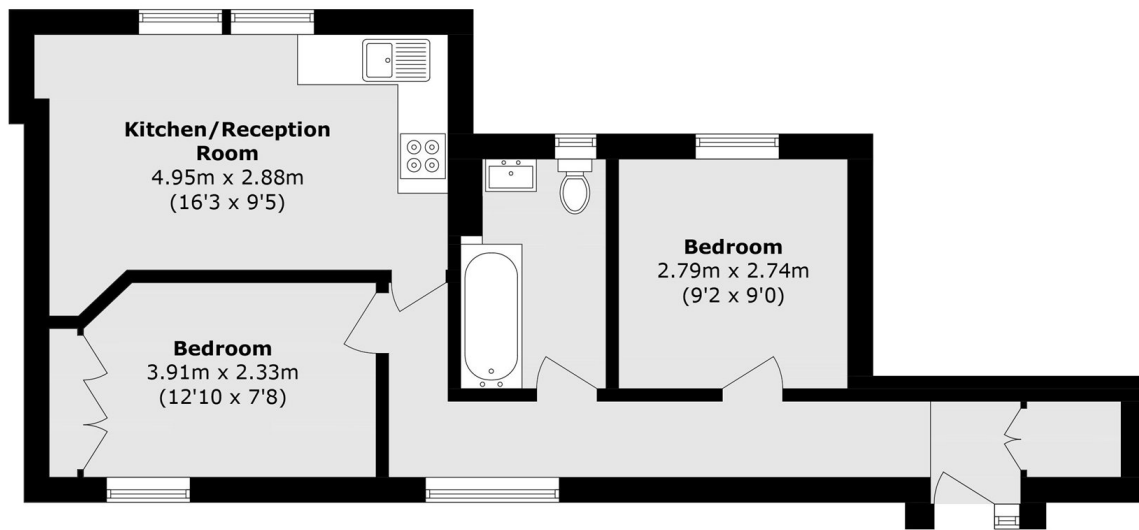
A well proportioned two bedroom flat situated in a desirable red brick mansion block. The property benefits from open plan living, natural light and built in storage throughout.

Warwick Mansions is situated on Cromwell Crescent which has easy access to all local amenities and transport links of both High Street Kensington and Earl's Court.

Features

- Two Bedrooms
- One Bathroom
- Open Plan
- Red Brick Mansion Block
- Natural Light
- Built-In Storage

Cromwell Crescent, London, SW5



Fourth Floor

Total area (approx.): 47.3 sq. m (509.1 sq. ft)