
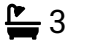



## 28 Harlsey Road,

Offers Over £975,000

 4  3  3



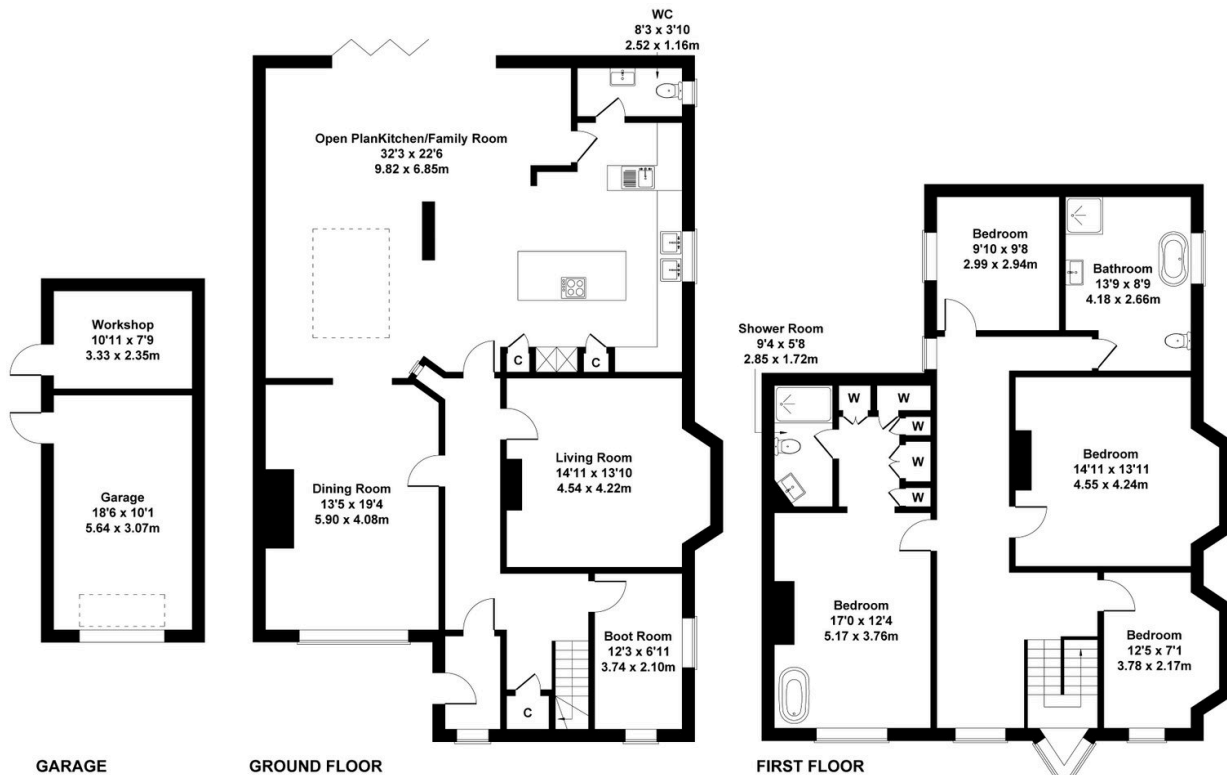
The Yorkshire Property Agency is delighted to introduce this simply stunning four bedroom luxury family home located on the prime street of Harlsey Road in Hartburn Village, TS18. Boasting a high-spec finish throughout, 28 Harlsey Road occupies an enviable and highly private plot of approximately a third of an acre on the periphery of the Hartburn Conservation zone.

## Key Features

- Stunning family home
- Four bedrooms
- Luxury finish throughout
- Substantial plot
- Fabulous rear extension
- Secure electric gates
- Off-street parking for multiple cars
- Three reception rooms
- Prime location
- Council tax band G

### 28 Harley Road, Stockton-On-Tees

Approximate Gross Internal Area  
3132 sq ft - 291 sq m



Not to Scale. Produced by The Plan Portal 2026  
For Illustrative Purposes Only.