

Edgecombe Way, St. Anns Chapel, Gunnislake, PL18

Guide Price £340,000

3 1 1



A beautifully modernised three-bedroom detached bungalow, located within a popular village setting in the Tamar Valley. Tastefully updated by the current owners, this home now features a stylish, contemporary interior that balances comfort with practicality, ideal for both family living and entertaining.

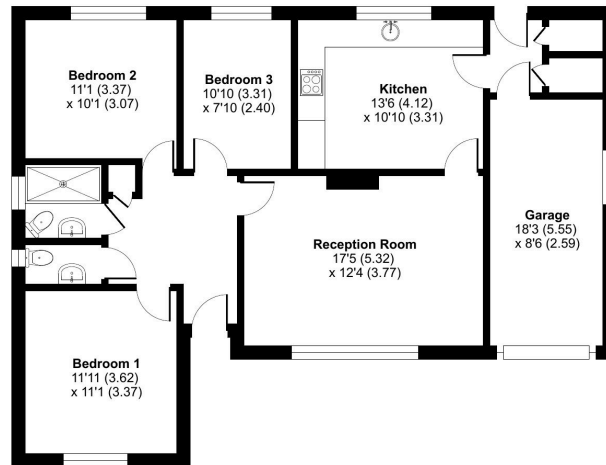
Situated in the village of St Ann's Chapel, the property lies approximately 4 miles from Callington and 6 miles from Tavistock. Local amenities include a convenience store with petrol station, primary schools, public houses, and a train station offering regular services to and from Plymouth.

Key Features

- TO ARRANGE A VIEWING PLEASE QUOTE BL0650
- Three Double Bedrooms
- Private Driveway With Ample Parking
- Stylish Kitchen With Integrated Appliances
- Popular Village Location
- Detached Bungalow
- Beautifully Presented Throughout
- Garage
- Front & Rear Gardens
- Freehold

Edgecombe Way, St. Anns Chapel, Gunnislake, PL18

Approximate Area = 918 sq ft / 85.2 sq m
 Garage = 148 sq ft / 13.7 sq m
 Total = 1066 sq ft / 98.9 sq m
 For identification only - Not to scale



GROUND FLOOR

Floor plan produced in accordance with RICS Property Measurement Standards incorporating International Property Measurement Standards (IPMS) Residential. ©richrecom 2026. Produced for Ben Estates TA Ben Langton Powered By exp. REF: 1494721