



20 Merryfield Way, Coventry

Coventry

Offers Over £350,000



# 20 Merryfield Way

Coventry, Coventry

Sought after residential area - Four bedroom detached family home - Spacious rear garden - Close to University Hospital - Large Driveway  
Council Tax band: D

Tenure: Freehold

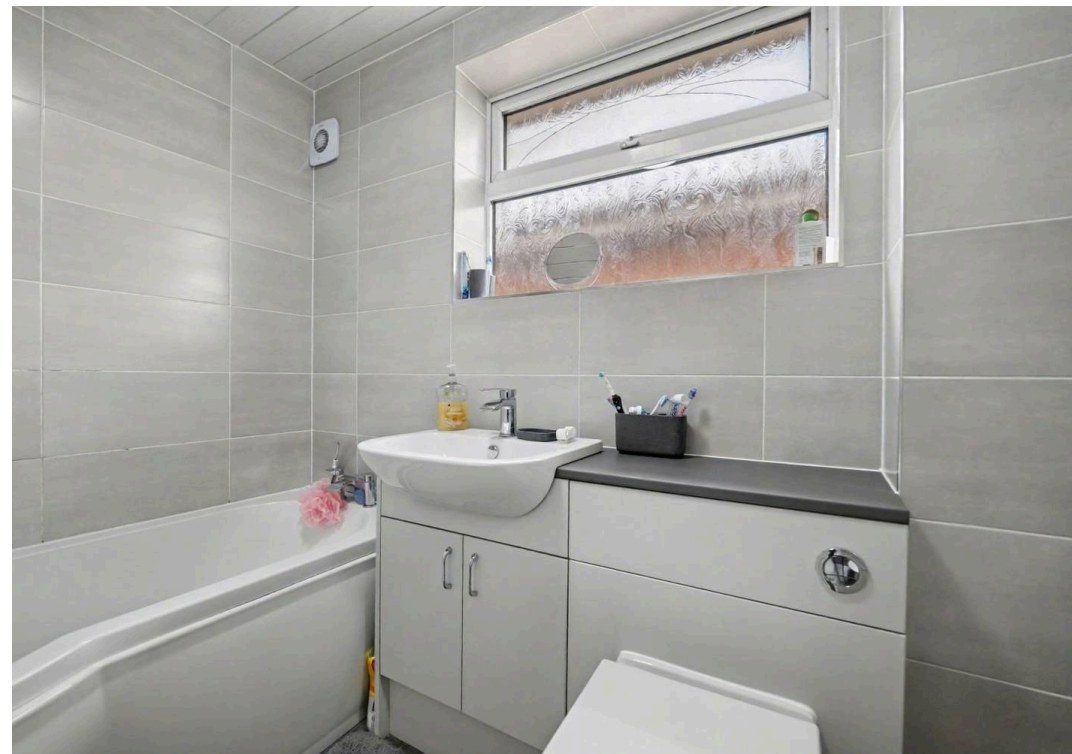
EPC Energy Efficiency Rating: D

EPC Environmental Impact Rating: D

- Highly sought after residential area
- Four bedroom detached family home
- Dual living spaces and versatility throughout
- Gorgeous spacious rear garden
- Perfect for families
- Close proximity to amazing amenities and transport links
- Close to University Hospital
- Driveway space for six cars
- Integral garage and dedicated utility room

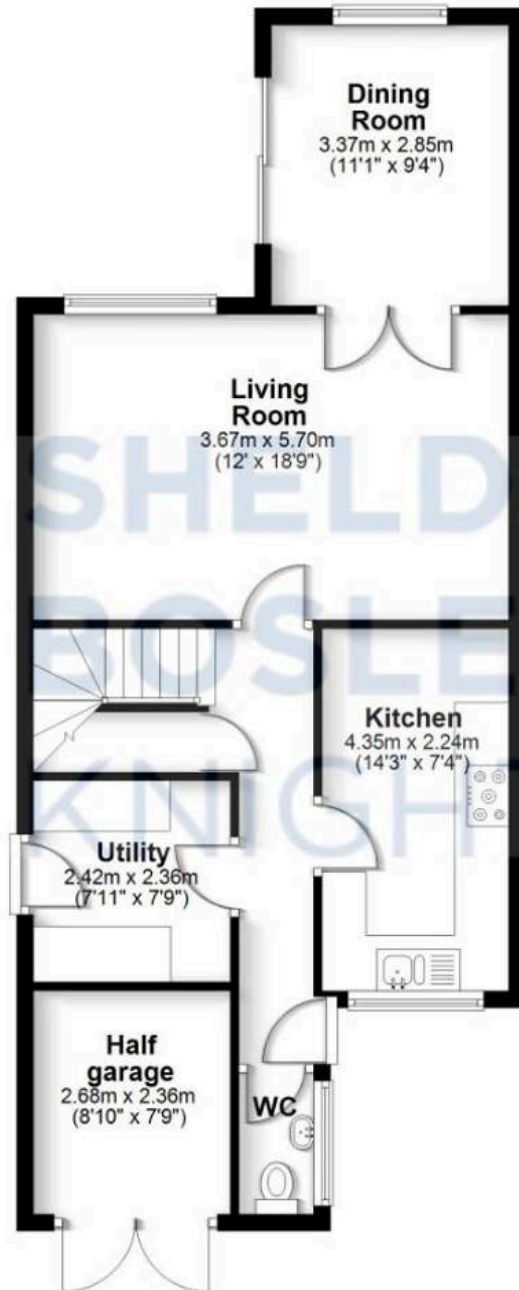






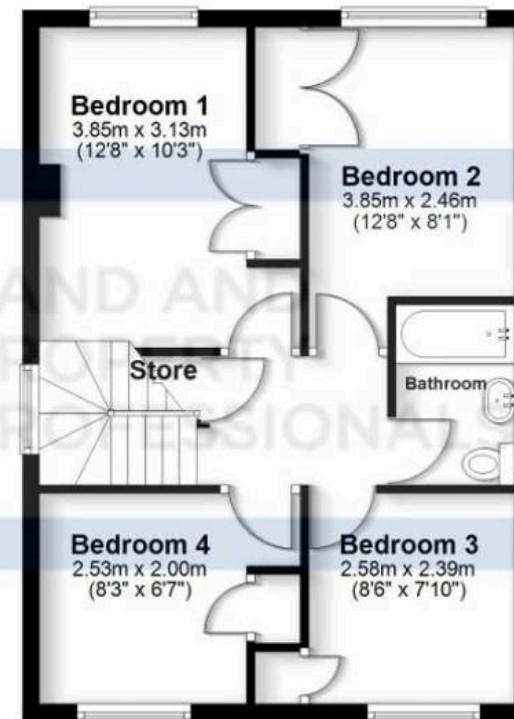
## Ground Floor

Approx. 50.3 sq. metres (541.7 sq. feet)



## First Floor

Approx. 46.9 sq. metres (504.3 sq. feet)



Total area: approx. 97.2 sq. metres (1046.0 sq. feet)

All efforts have been made to ensure the measurements are accurate on this floor plan, however these are for guidance purposes only.  
Plan produced using PlanUp.





## Sheldon Bosley Knight Coventry

Loveitts, 29 Warwick Row – CV1 1DY

02476258421 • [coventrysales@sheldonbosleyknight.co.uk](mailto:coventrysales@sheldonbosleyknight.co.uk) • [www.sheldonbosleyknight.co.uk/](http://www.sheldonbosleyknight.co.uk/)