



7 Kingsmead Court, Constables Way, Hertford
SG13 7LR
£332,500



stevenoates.com



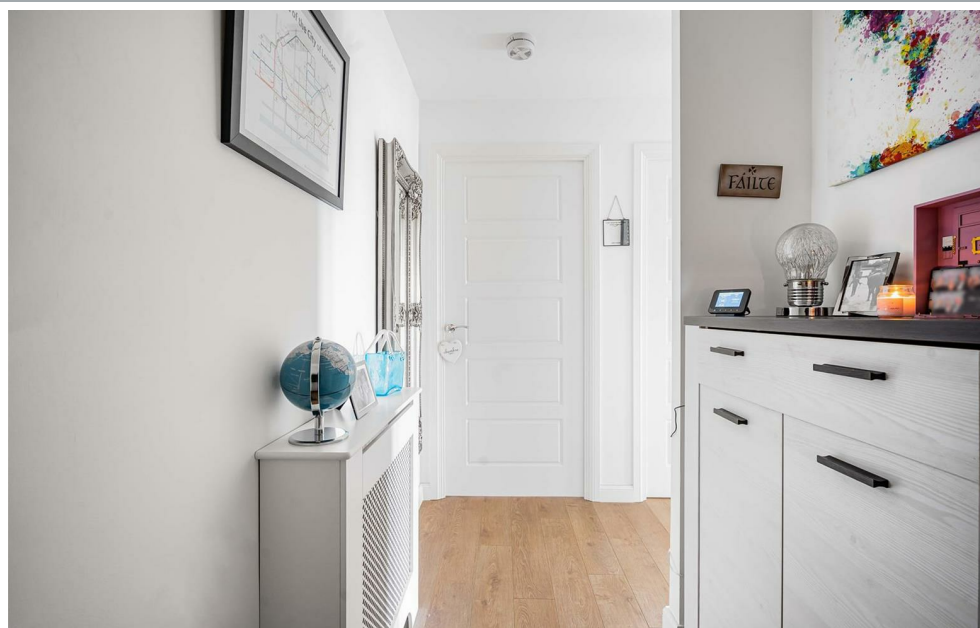
7 Kingsmead Court Constables Way, Hertford, SG13 7LR

****CHAIN FREE**** A two double bedroom second floor apartment situated in a popular development, convenient for Hertford Towns multiple facilities and transport links into London. The property offers bright and spacious accommodation comprising of 787 sq ft. Benefits include; 23' open plan lounge/kitchen & dining area with access to a private balcony, two double bedrooms of which the master bedroom has its own en-suite shower room and family bathroom. There is a lift in block and an allocated car parking space.

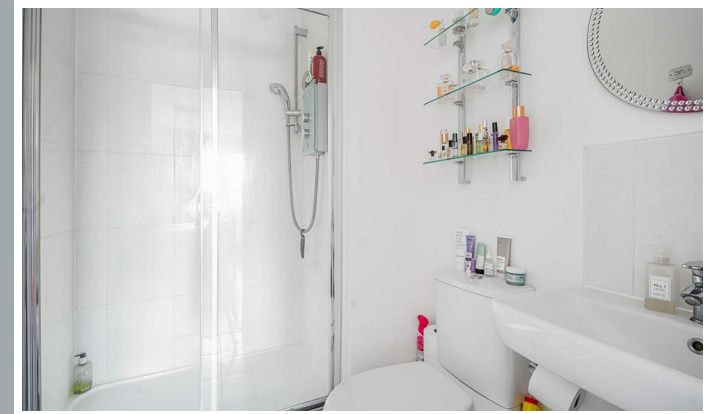
Kingsmead Court is located within a beautiful Development which is ideally located moments from the fantastic facilities of Hertford town centre, while the green open spaces of Hartham Common and the Meads are close by. The property is within walking distance of Hertford East servicing London.



70 Fore Street, Hertford, Hertfordshire, SG14 1BY



70 Fore Street, Hertford, Hertfordshire, SG14 1BY



70 Fore Street, Hertford, Hertfordshire, SG14 1BY

Approximate Gross Internal Area 787 sq ft - 73 sq m



Floor plan produced in accordance with RICS Property Measurement 2nd Edition. Although Pink Plan Ltd ensures the highest level of accuracy, measurements of doors, windows and rooms are approximate and no responsibility is taken for error, omission or misstatement. These plans are for representation purposes only and no guarantee is given on the total square footage of the property within this plan. The figure icon is for initial guidance only and should not be relied on as a basis of valuation.



These particulars, whilst believed to be accurate are set out as a general outline only for guidance and do not constitute any part of an offer or contract. Intending purchasers should not rely on them as statements of representation of fact, but must satisfy themselves by inspection or otherwise as to their accuracy. No person in this firm's employment has the authority to make or give any representation or warranty in respect of the property.



stevenoates.com