



Colosseum Terrace, NW1

£850 Per week

Dexters



Colosseum Terrace, NW1

A spacious and newly refurbished two double bedroom, two bathroom apartment on the ground floor of this well maintained Period Mansion house. The property offers fully equipped open plan kitchen, high ceiling and wooden flooring throughout the apartment.

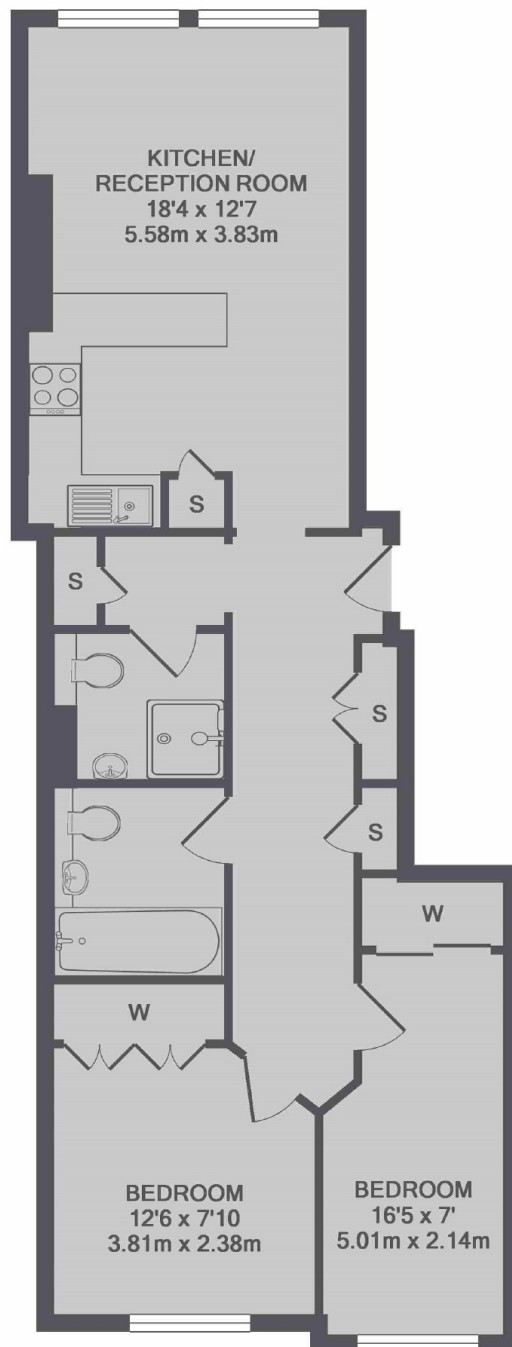
Colosseum Terrace is a popular street which runs from Marylebone Road up to Gloucester Gate and is just moments from Great Portland Street Underground Station.

Features

- Central Location
- Two Bathrooms
- Two Bedrooms
- Period Conversion
- High Ceilings
- Recently Refurbished



Colosseum Terrace, London, NW1



TOTAL APPROX. FLOOR AREA 699 SQ.FT. (64.9 SQ.M.)

Dexters

Fitzrovia & Covent Garden
66 Gooch Street
London
W1T 4NG
Lettings
020 7067 2402

Energy Rating: D. We aim to make our particulars both accurate and reliable. However they are not guaranteed; nor do they form part of an offer or contract. If you require clarification on any points then please contact us, especially if you're traveling some distance to view. Please note that appliances and heating systems have not been tested and therefore no warranties can be given as to their good working order.

 **RICS** | Regulated
Estate Agent
and Letting Agent

[dexters.co.uk](https://www.dexters.co.uk)