

## Dartmouth Close, W11

£425,000

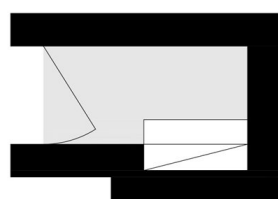
A well-presented and spacious second floor flat (entrance on the first floor) in a purpose built block entered off Ledbury Road, with communal garden. The open plan kitchen and reception room has room to dine and the bedroom has built-in wardrobes and access to the private balcony.

This is an ideal location for anyone seeking a prime Notting Hill location, close to Portobello Market, with plenty of restaurants, boutiques and pubs to choose from. Westbourne Park Underground is a short walk away and the green spaces of Hyde Park are close by.

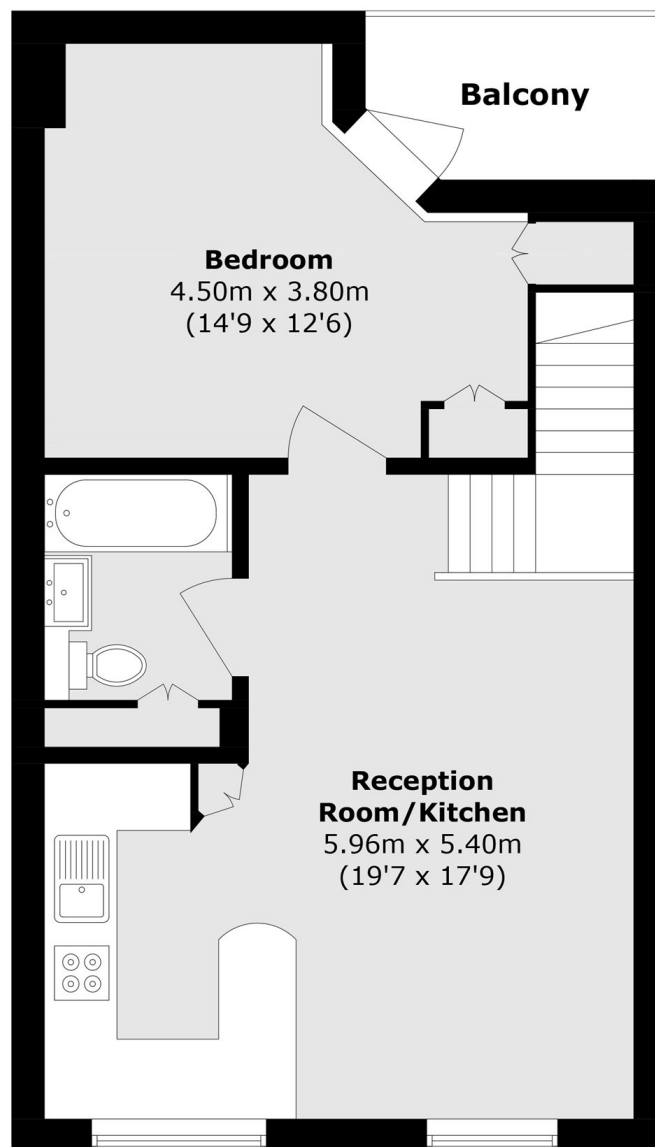
### Features

- One Double Bedroom
- Open Plan
- Balcony
- Purpose Built
- Communal Garden
- Notting Hill

# Dartmouth Close, London, W11



**First Floor**



**Second Floor**

Total area (approx.): 51.2 sq. m (551.1 sq. ft)

Balcony area (approx.): 3.8 sq. m (40.9 sq. ft)