



Connells

Goodwood Drive
Oxley Wolverhampton



Property Description

Samuel Thorneywork from the Award Winning Connells Wolverhampton branch is delighted to bring to the market this deceptively spacious four bedroom semi detached town house on the popular Akron Gate development in Oxley. Viewings are highly recommended, call Connells today to book your viewing.

Internally the property comprises of entrance hall, ground floor wc, kitchen diner and spacious lounge. Heading to the first floor you will find three generous size bedrooms and a family bathroom. On the second floor is a master bedroom with en-suite shower room. Outside to the front is a courtyard style frontage with artificial lawn, ample off road parking to the side with electric car charging point and a low maintenance rear garden with artificial lawn.

The Location & Area

Situated on the recently built development conveniently located for the A449 Stafford Road which offers commuting links to the M54 and M6 motorways as well as the i54 Commercial Development. Wolverhampton City centre and University is also relatively close by and further shopping can be found within Wednesfield Bentley Bridge retail park.

Approach

Set back from the roadside behind a courtyard style frontage with artificial lawn and to the side is off road parking for several vehicles with electric car charging point, access to the main accommodation and side gate, outside tap point.

Entrance Hall

Storage cupboard, central heating radiator, ceiling light point, stairs rising to first floor, doors to ground floor wc, lounge and kitchen diner.

Ground Floor Wc

Low flush wc, wash hand basin, part tiled walls, ceiling light point, double glazed window to front.

Kitchen Diner

15' 5" x 9' 5" (4.70m x 2.87m)

Matching wall and base units, one and half stainless steel sink and drainer with mixer tap, part tiled walls, integrated oven, four ring gas hob, extractor hood, plumbing for washing machine, plumbing for an American style fridge freezer, two ceiling light points, central heating radiator, double glazed window to front.

Lounge

16' 6" x 10' 2" (5.03m x 3.10m)

Double glazed window to rear, ceiling light point, central heating radiator, french doors to rear garden.

First Floor Landing

Doors to various rooms, stairs to second floor.

Bedroom Two

13' 5" x 9' 6" (4.09m x 2.90m)

Double glazed window to rear, ceiling light point, central heating radiator.

Bedroom Three

12' x 9' 6" (3.66m x 2.90m)

Double glazed window to front, ceiling light point, central heating radiator.

Bedroom Four

10' x 6' 7" (3.05m x 2.01m)

Double glazed window to rear, ceiling light point, central heating radiator.

Bathroom

Panelled bath with shower over, low flush wc, wash hand basin, central heating radiator, part tiled walls, extractor fan, ceiling light point, double glazed window to front.

Second Floor Landing

Doors to Bedroom, ceiling light point.

Bedroom One

20' 5" x 13' 1" (6.22m x 3.99m)

Double glazed window to front, skylight window, loft access, two central heating radiators, ceiling light point, door to en-suite shower room.

En-Suite Shower Room

Shower cubicle, low flush wc, wash hand basin, part tiled walls, extractor fan, ceiling light point, central heating radiator, skylight window.

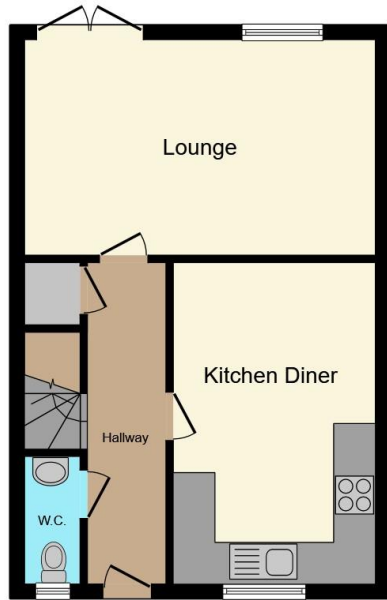
Outside Rear

Paved patio, artificial lawn, timber shed, side gate, timber fencing.

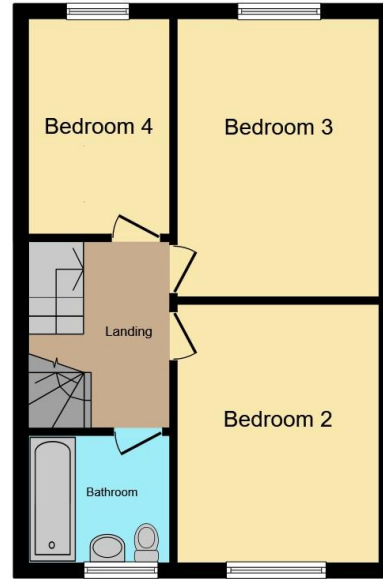




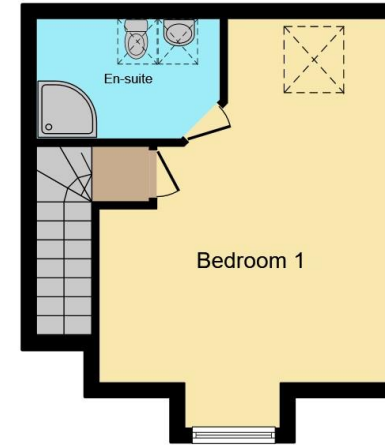




Ground Floor



First Floor



Second Floor

Total floor area 105.3 m² (1,133 sq.ft.) approx

This floor plan is for illustrative purposes only. It is not drawn to scale. Any measurements, floor areas (including any total floor area), openings and orientation are approximate. No details are guaranteed, they cannot be relied upon for any purpose and they do not form part of any agreement. No liability is taken for any error, omission or misstatement. A party must rely upon its own inspection(s). Powered by www.propertybox.io



To view this property please contact Connells on

T 01902 710 170
E wolverhampton@connells.co.uk

81-83 Darlington Street
 WOLVERHAMPTON WV1 4EX

EPC Rating: B Council Tax Band: C

Tenure: Freehold

view this property online connells.co.uk/Property/WVH335494



1. MONEY LAUNDERING REGULATIONS Intending purchasers will be asked to produce identification documentation at a later stage and we would ask for your co-operation in order that there will be no delay in agreeing the sale. 2. These particulars do not constitute part or all of an offer or contract. 3. The measurements indicated are supplied for guidance only and as such must be considered incorrect. Potential buyers are advised to recheck measurements before committing to any expense. 4. We have not tested any apparatus, equipment, fixtures, fittings or services and it is in the buyers interest to check the working condition of any appliances.

Connells Residential is registered in England and Wales under company number 1489613, Registered Office is Cumbria House, 16-20 Hockliffe Street, Leighton Buzzard, Bedfordshire, LU7 1GN. VAT Registration Number is 500 2481 05.

See all our properties at www.connells.co.uk | www.rightmove.co.uk | www.zoopla.co.uk

Property Ref: WVH335494 - 0002