



Guide Price
£650,000

Freehold

4x  2x  2x 

**Porchester Close, Loose,
Maidstone, Kent, ME15**

OVER 60?

Secure this property
for up to **59% less!**

Wards
Helping you move forwards



Main features

- Open plan kitchen/breakfast room and stunning conservatory
- Well presented throughout
- Tucked away in a quiet cul de sac
- Solar panels feeding back into the grid to save you money
- Short walk to sought after Loose Primary School, local shops and amenities

Accommodation

GROUND FLOOR

- Entrance Hall
- Cloakroom/Utility Room: 7'1 x 5'0 (2.16m x 1.53m)
- Lounge: 14'1 x 13'0 (4.30m x 3.97m)
- Study: 7'1 x 5'1 (2.16m x 1.55m)
- Dining Room: 14'0 x 8'0 (4.27m x 2.44m)
- Kitchen/Breakfast Area: 19'1 x 11'1 (5.82m x 3.38m)
- Conservatory: 26'0 x 12'1 (7.93m x 3.69m)

FIRST FLOOR

- Landing
- Bedroom 1: 14'1 x 8'1 (4.30m x 2.47m)
- En Suite Shower Room: 7'0 x 3'1 (2.14m x 0.94m)
- Bedroom 2: 14'1 x 10'1 (4.30m x 3.08m)
- Bedroom 3: 10'1 x 7'1 (3.08m x 2.16m)
- Bedroom 4: 11'1 x 8'0 (3.38m x 2.44m)
- Bathroom: 8'1 x 6'0 (2.47m x 1.83m)

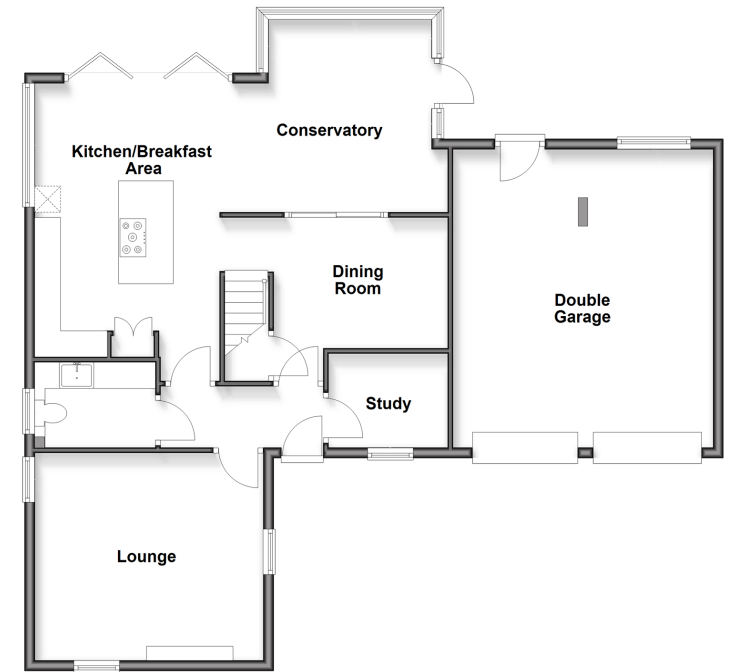
OUTSIDE

- Double Garage and Driveway
- Front and Rear Gardens

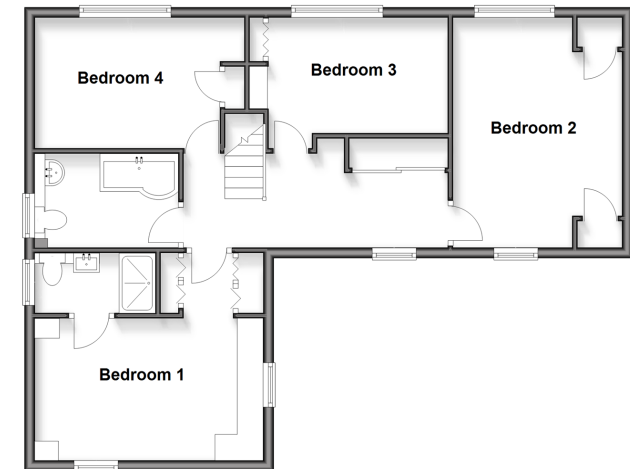
Call Loose - 01622 744067 ■ wardsof Kent.co.uk

- Legal advice should be taken to verify fixtures/fittings, planning, alterations and/or lease details
- Appliances & services are untested, dimensions are approximate and floor plans are not to scale
- Through a Homewise Home For Life Plan people aged 60+ can secure this property for up to 59% less, by purchasing a Lifetime Lease

Ground Floor
Approx. 106.1 sq. metres (1141.8 sq. feet)



First Floor
Approx. 67.4 sq. metres (725.3 sq. feet)



13022367 / 20260212 / KIR / AT