

21 Priory Close
Hethersett
Norwich
NR9 3HZ



21 Priory Close

Guide Price £325,000

Immaculate detached bungalow on a great plot...

Tucked away in a quiet and desirable cul-de-sac in the heart of Hethersett, this immaculately presented three-bedroom detached bungalow offers stylish, single-storey living with all the comforts of a thoughtfully modernised home. The setting is idyllic – peaceful and private, with charming village surroundings, while still enjoying convenient access to Norwich city centre, just a short drive away.

Stepping through the welcoming porch, you're greeted by a bright and modern interior. The current owners have lovingly enhanced the property, with tasteful updates throughout, including new flooring, updated lighting, and high-spec broadband routing.

The kitchen is double aspect and well-appointed, featuring a gas hob, electric oven, pantry, and clever details like automatic lighting. Flowing seamlessly from the kitchen is the heart of the home: a generous open-plan lounge and dining area, bathed in natural light, with sliding doors opening onto the stunning rear garden.

The master bedroom is a true retreat, with garden views and sliding doors leading out to a private patio — perfect for morning coffee or evening barbecues. Two further bedrooms offer flexibility: one currently used as a spacious office, and the other transformed into a luxurious nursery (easily reverted to a bedroom if needed). The family bathroom is beautifully fitted with contemporary fixtures, including a waterfall shower, heated towel rail, and ample storage.

Outside, the south-facing rear garden is a hidden gem, with a mix of lawn, patio, vegetable patches, compost bins, and even crab apple trees. Whether you're keen on growing your own produce or simply enjoying the sun in total privacy, this space caters to it all. A detached garage serves as both storage and workshop space, with power and light already installed. There's also access to a partially boarded loft, offering further potential.

Located in the sought-after village of Hethersett, you'll enjoy the best of both worlds – a friendly, community feel, excellent local amenities, and great transport links to Norwich, the A11, and beyond. Whether you're upsizing, downsizing, or simply looking for a peaceful place to call home, 21 Priory Close is ready to move straight into – no work required.

A turnkey gem in a prime village location – viewing highly recommended.

Agents notes...

A pre-recorded walkaround tour is available for this property

Local Authority
South Norfolk

Council Tax Band C

EPC Rating C



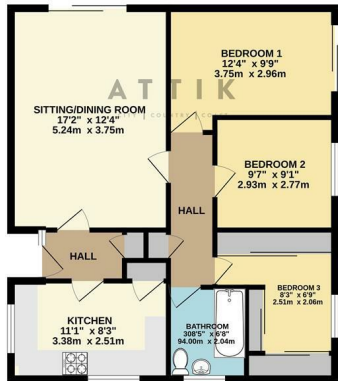
Contact

01603 964777

enquiries@attikccc.co.uk

www.attikccc.co.uk

GROUND FLOOR
859 sq.ft. (79.8 sq.m.) approx.



TOTAL FLOOR AREA: 859 sq.ft. (79.8 sq.m.) approx.
When using planning this must be used to ensure the accuracy of the figures. The figures are approximate and not intended to be used for any other purpose. The plan is for illustrative purposes only and should be used as a guide only. The figures are approximate and not intended to be used for any other purpose. The plan is for illustrative purposes only and should be used as a guide only. The figures are approximate and not intended to be used for any other purpose. The plan is for illustrative purposes only and should be used as a guide only.