



The Cobbles, High Street, Milton OX14 4EJ



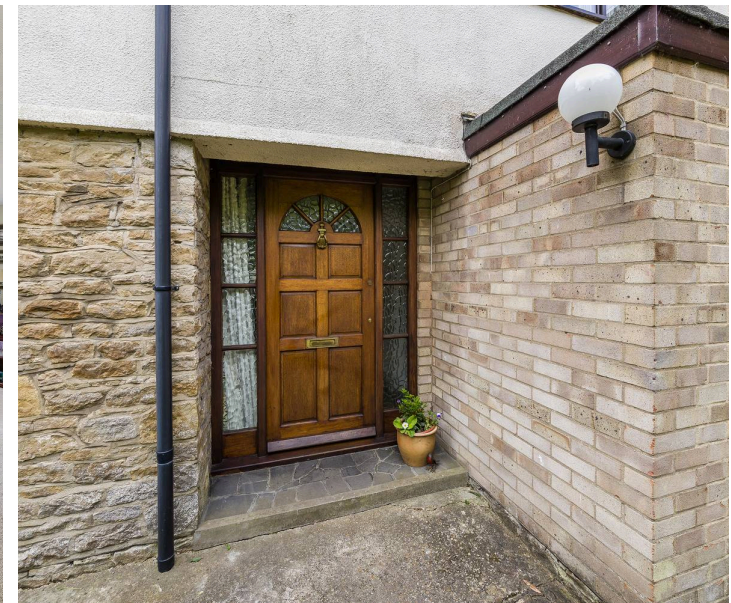
The Cobbles

Individual and very spacious 1591 sq ft four-bedroom detached house situation in a delightful location within the heart of this very popular village offering many features including a well equipped kitchen and very large triple aspect living room/dining room with an attractive open fireplace and double doors leading to delightful orangery providing panoramic views over the mature walled gardens.

The Cobbles is situated in a delightful location within the heart of this very popular village, offering easy access to many nearby amenities including, The Plum Pudding public house, village post office, the chemist and the Park Club gym and pool. The thriving Milton Business Park offers a wide range of amenities including the new Signal Yard which brings 17 state-of-the-art, new build units offering a vibrant mix of food and beverage, retail and leisure venues, which also serves local residents and helps to create an excellent community spirit. The Milton Interchange is a short drive leading directly onto the A34 offering a quick route to the nearby towns of Abingdon (circa. 4 miles), Didcot (circa. 3 miles), Wantage (circa. 6 miles) and Oxford city centre (circa. 9 miles). For railway commuters there is easy access to Didcot mainline railway station providing a quick link to London Paddington station (approximately 45 minutes).

Bedrooms: 4 Bathrooms: 1 Reception Rooms: 2

Council Tax Band: F Tenure: Freehold EPC: D



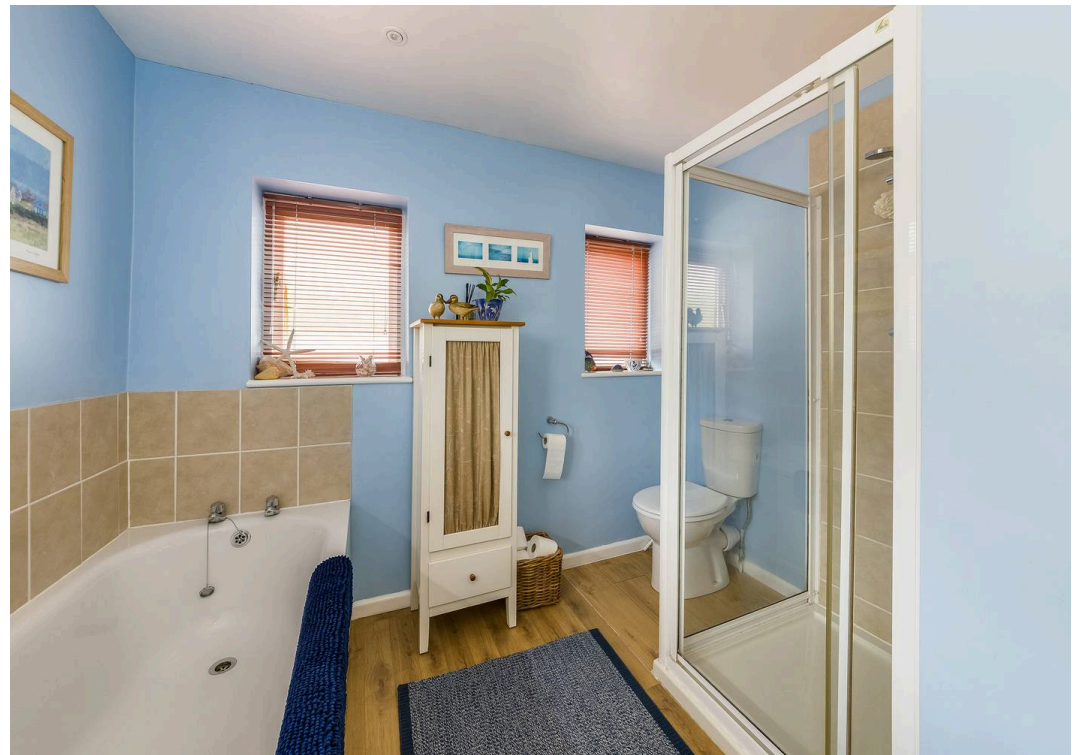


Key Features

- Inviting entrance hall leading to an impressive and very large triple aspect living room/dining room featuring a double glazed bay window and attractive open fireplace
- Delightful double glazed orangery featuring glass vaulted ceiling and provides panoramic views over the mature walled gardens
- Well equipped kitchen and rear porch leading to cloakroom/utility room
- Large first floor main double aspect double bedroom and a second large double aspect double bedroom
- Two further spacious first floor bedrooms complemented by four piece family bathroom with white suite including bath and separate shower cubicle
- Attractive and predominantly walled corner plot gardens approached through a gate leading to parking facilities for several vehicles and access to gardens extending to all sides of the property
- These gardens include a good sized lawn area surrounded by mature flower and shrub borders - the whole enclosed by fencing and high stonewalling, providing good degrees of privacy











BRITISH
PROPERTY
AWARDS
2024

GOLD WINNER

ESTATE AGENT
IN ABINGDON



**Introducing the Hodsons team...
...trust in our experience!**



High Street, OX14

Approximate Gross Internal Area = 147.80 sq m / 1591 sq ft

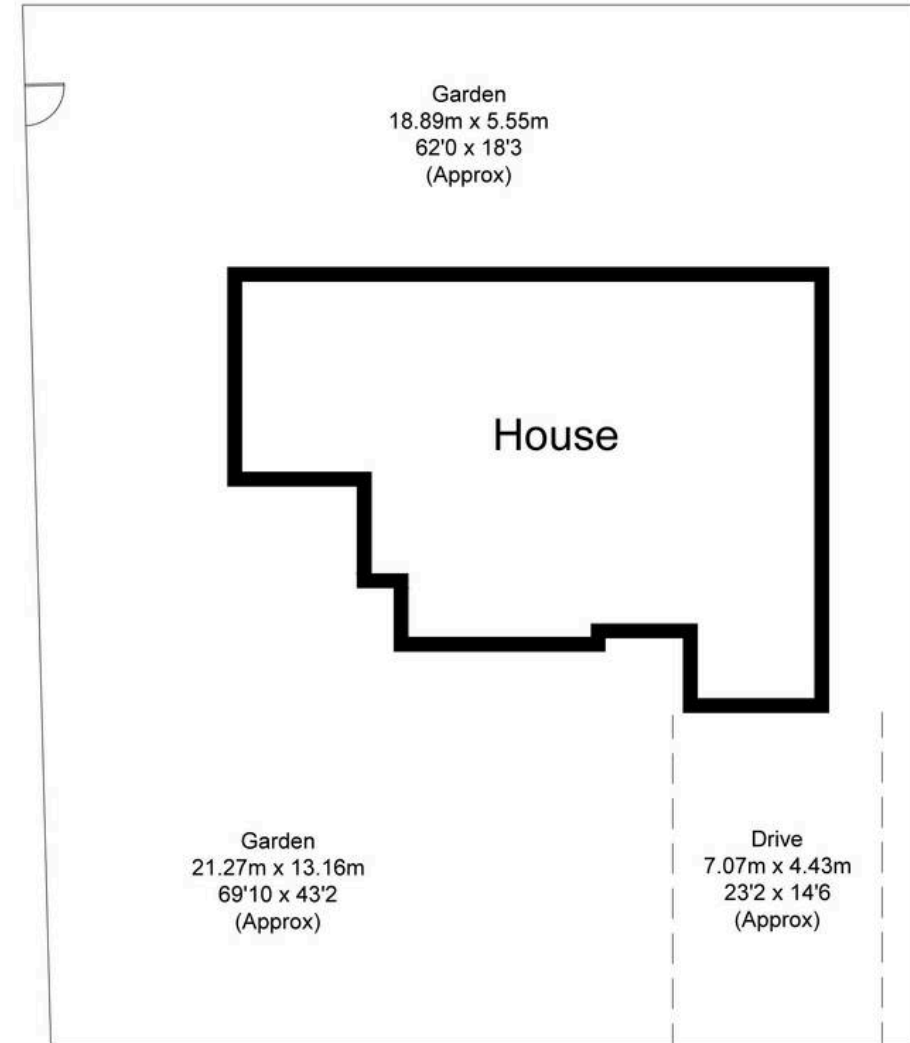
For identification only - Not to scale



First Floor



Ground Floor



Not to scale, for illustration and layout purposes only.
© Mortimer Photography. Produced for Hodsons.
Unauthorised reproduction prohibited



Hodsons
...your move, our passion
Sales | Lettings

5 Ock Street, Abingdon,
Oxfordshire, OX14 5AL
T: 01235 553686
E: abingdon@hodsons.co.uk
www.hodsons.co.uk