

3
BED

Stunning Cottage Located In Denton Village

60, Denton Road, Newhaven, BN9 0QD



Offers Over £369,950

Freehold

phillipmann
we do more

www.phillipmann.com

60 Denton Rd, BN9 0QD

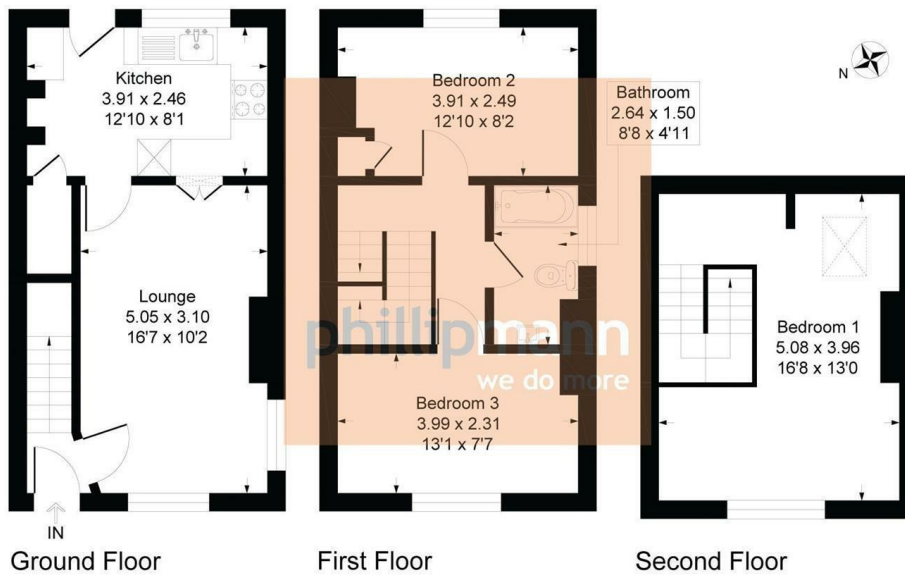


Illustration for identification purposes only, measurements are approximate, not to scale

inbrief...

Phillip Mann estate agents are delighted to offer for sale this stunning cottage located in Denton Village. The grade II property is in excellent condition throughout and an internal viewing is highly recommended.

An original front door gives access to the downstairs accommodation. The lounge/diner is a stunning bright room with solid wood flooring, a feature fireplace with inset gas fire and a window overlook the front. A door gives access to an attractive kitchen which has a range of fitted units. There is a built in sink unit along with a electric oven and for ring gas hob. There is ample space for appliances and the room is complete with part tiled walls, small breakfast bar, understairs storage cupboards and a window overlooks the rear garden.

The first floor landing has solid wood flooring and doors which leads to this floors accommodation. Bedroom two is good size double with a window overlooking the front which enjoys views towards South Heighton church and out towards to The South Downs. Bedroom three is a further good size double and overlooks the rear. Completing this floor is a family bathroom which has been refitted to include a panelled bath with shower over, wash hand basin and low level WC. The room has part tiled walls and a window overlooks the rear.

Finishing off the inside is bedroom one which occupies the whole of the top floor. This is delightful room which ample space for wardrobes and a window overlooks the front.

Outside there is a lovely landscaped rear garden which is arranged over several levels. There is a good size lower patio area and a good size upper lawn area. There is a selection of flower, shrubs and the garden is fence enclosed.

There is also a lovely front garden with a pathway leading to the front door.



Energy Rating D

Council Tax Band D

moreinfo...



Phillip Mann Newhaven Office
16 Bridge Street, Newhaven, BN9 9PJ
01273 517517

To see more details on this & all our homes go to
www.phillipmann.com