



HARDINGS

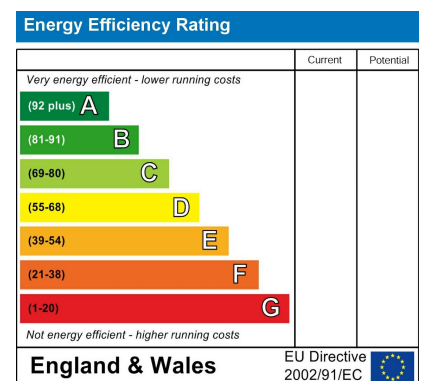


Straight Road
Guide Price £850,000



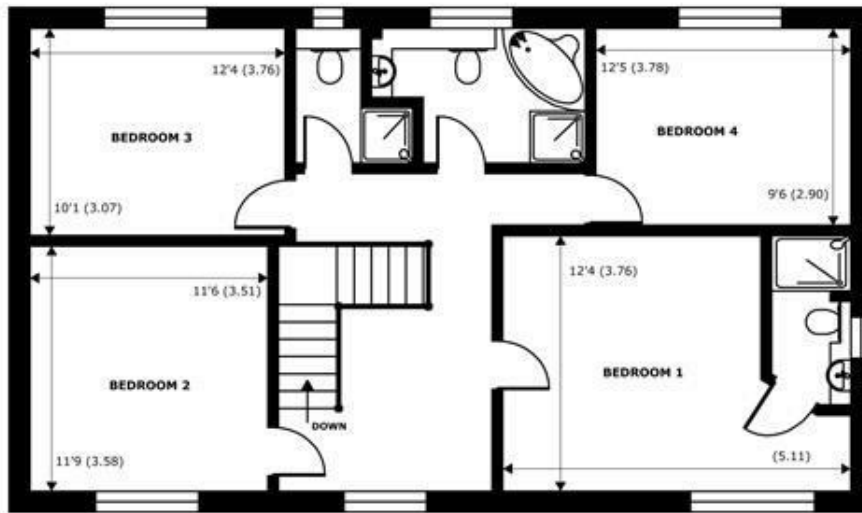


A spacious and well presented four bedroom executive family home located in the desirable village of Old Windsor, close local amenities and well regarded schools. Set back from the road, this detached family home offers approximately 1900 square feet of versatile living space, including generous sitting room and conservatory with direct access onto a mature garden with sweeping views over Crown land. Further benefits include, 3 bathrooms, utility room, double integral garage.



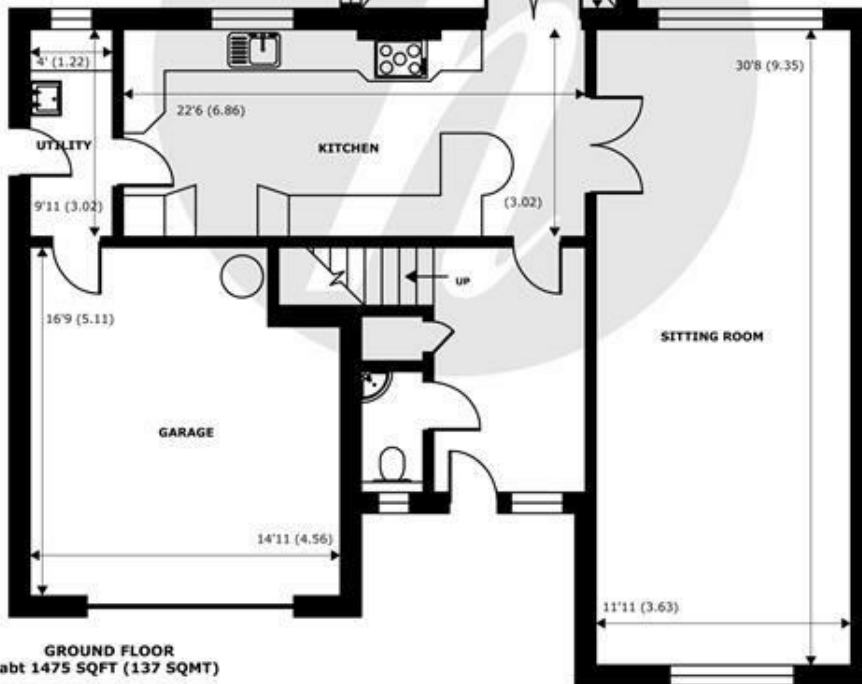
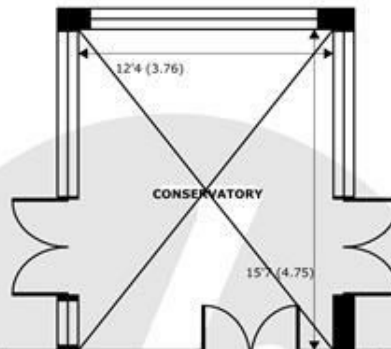
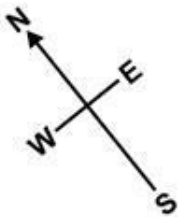
Features

- Detached Family Home
- Integral Double Garage
- Four Bedrooms
- Well Presented Throughout
- Large Private Garden
- Off Street Parking
- Utility Room
- Three Bathrooms & Downstairs Cloakroom
- No Onward Chain
- Remodelled Kitchen



Denotes restricted head height

FIRST FLOOR
abt 1013 SQFT (94.1 SQMT)



GROUND FLOOR
abt 1475 SQFT (137 SQMT)

Straight Road, Old Windsor, Windsor, SL4

Approximate Internal Area = 1893 sq ft / 175.8 sq m (Exclude Garage & Outbuildings)
 Approximate External Area = 2190 sq ft / 203.4 sq m (Exclude Garage & Outbuildings)

For identification only - Not to scale



Floor plan produced in accordance with RICS Property Measurement 2nd Edition,
 Incorporating International Property Measurement Standards (IPMS2 Residential). © nichecom 2025.
 Produced for Hardings. REF: 1376394





11 High Street, Windsor, Berkshire, SL4 1LD,
T: 01753 833 118 | E: info@hardings.co.uk
www.hardings.co.uk

