



## **Bridstow Place, W2**

£5,000 Per calendar month

**Dexters**



## Bridstow Place, W2

A beautifully designed one bedroom cottage quietly tucked away just behind Westbourne Grove, offering a rare sense of privacy in the heart of Notting Hill. Finished to an exceptional standard throughout, the house provides stylish, well-balanced living space along with the added benefit of a private front patio garden and a stunning roof terrace.

Bristow Place is a charming and peaceful enclave just off Chepstow Road, discreetly tucked behind Westbourne Grove in the very heart of Notting Hill.

### Features

- One Bedroom House
- Architecturally Designed
- Newly Refurbished
- Patio Front Garden
- Roof Terrace
- Two Receptions

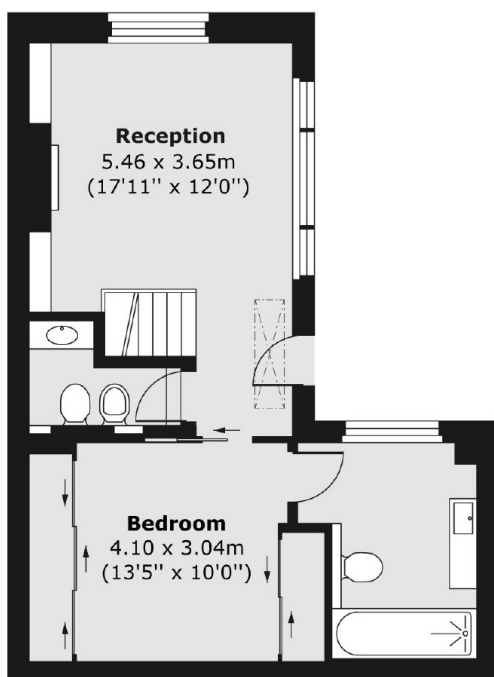




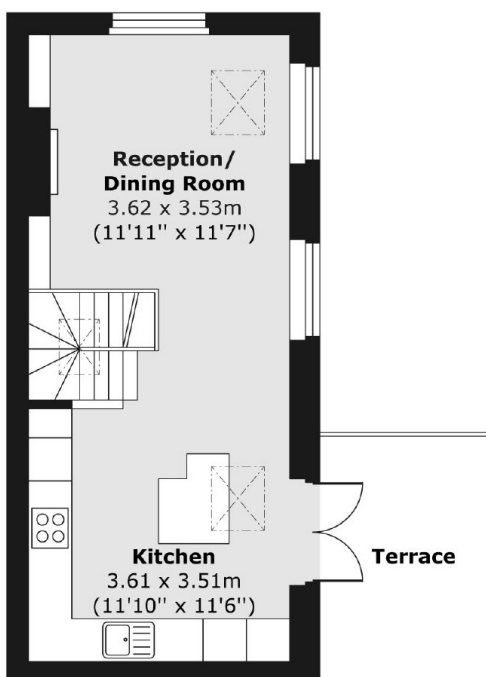


# Bridstow Place, London, W2

Ground Floor



First Floor



Total area (approx.) 70.81 sq. m (762 sq. ft)  
Terrace area (approx.) 8.18 sq. m (88 sq. ft)