



SIMPLE LIFE



SIMPLE LIFE



## Merchant Avenue, Bury St. Edmunds, IP32

£1,640 Per Month

We're delighted to present Fornham Place, part of the Marham Park village development on the outskirts of Bury St Edmunds.

The Ashley is a fantastic three bedroom property offering you flexible entertaining space with family practicality. Downstairs after entering through the porch and past the handy WC is the open kitchen space, leading to your living and dining area. Open plan to create a sense of flow, French windows allow access to your private garden, ideal for summer months expanding your living space.

Upstairs, the master bedroom has its own ensuite, creating a perfect adult haven. There are two further good-sized bedrooms, plus a family bathroom complete with shower and bath.

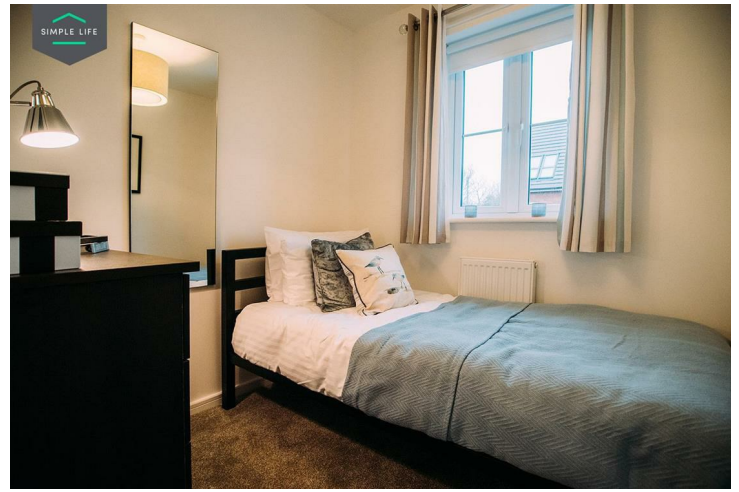
The site benefits from proximity to 20 schools rated 'Good' or 'Outstanding' by Ofsted, as well as the Arc shopping centre and Western Way Retail Parks nearby, providing a good range of shops, restaurants and leisure facilities.

Transport links are highly accessible from Fornham Place too, being just over a mile from the A14, and Bury St Edmunds train station also allowing direct services to Ipswich, Cambridge, Norwich and onwards to London.

To visit the site, use postcode IP32 6TN with the site north of Markham Parkway.

Deposit: £1890  
Holding deposit: £370  
Unfurnished  
Council tax: C  
Available 4th August 2026





## Key Features

- Private driveway
- Dishwasher
- Washing machine
- Wood effect flooring downstairs
- Carpets in bedrooms and stairs
- Security alarm system
- Fridge freezer
- Oven and hob
- Modern, white kitchen units

## Location

