



Lordship Lane, SE22

£525,000

Set on the top floor of a handsome period building, this beautifully finished two bedroom apartment offers elevated views, a large private garden, excellent natural light and a high specification finish throughout. The property has been fully refurbished to a meticulous standard, with a stylish open plan kitchen and reception room that enjoys far reaching views across the surrounding area. The kitchen is sleek and contemporary, thoughtfully designed to maximise both storage and workspace, while the reception space feels bright and welcoming, ideal for both everyday living and entertaining. There are two bedrooms, both finished to a high standard, alongside a modern bathroom with quality fittings and a clean, timeless design.

The bathroom is fully tiled and custom fitted, designed with careful attention to detail to maximise storage while maintaining a clean and elegant finish.

A rare and valuable feature is the sole and exclusive use of an extensive loft space, accessed via an internal ladder, currently ideal for storage. The loft also presents potential to be purchased and converted into additional accommodation, subject to the necessary planning permissions and consents.

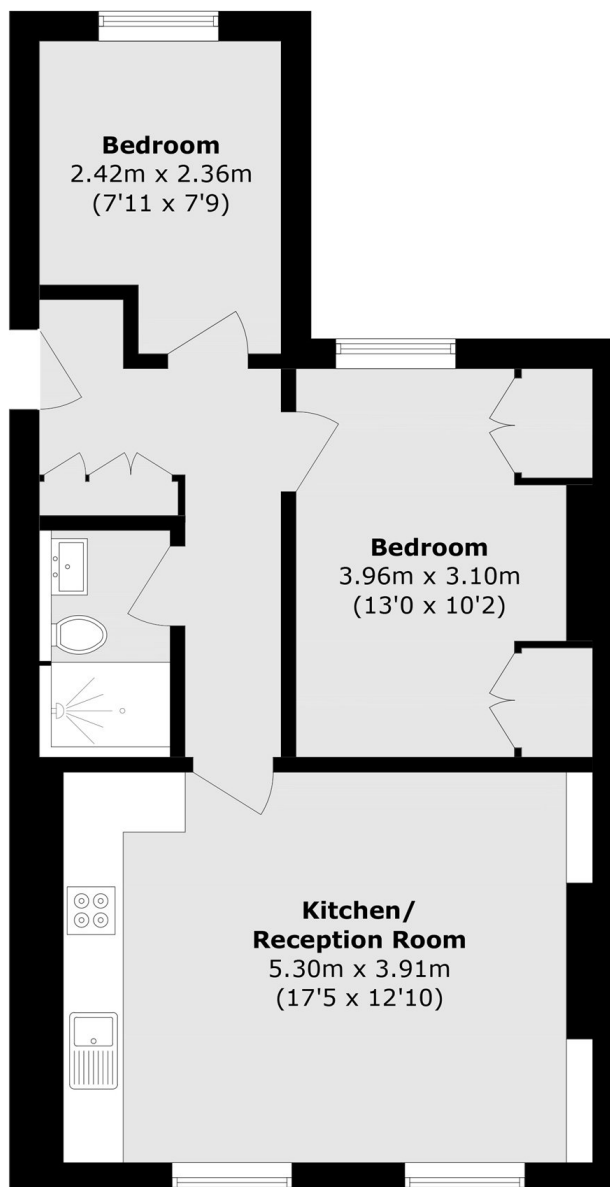
The property further benefits from access to a private garden, which is not directly accessed from the flat but provides valuable outdoor space, a particularly unusual advantage for a top floor apartment.

Positioned on Lordship Lane, the property is perfectly placed for the independent shops, cafes and restaurants of East Dulwich, as well as the green open spaces of Peckham Rye Common. Excellent transport links are available nearby, including Peckham Rye and East Dulwich Stations offering fast connections into central London.

Features

- Two Bedroom Apartment
- Top Floor
- Victorian Conversion
- Large Private Garden
- Potential To Extend STPP
- Amazing Views

Lordship Lane, London, SE22



Total area (approx.): 51.9 sq. m (558.6 sq. ft)