



## THE BROADWAY, MIDDLESEX, UB6

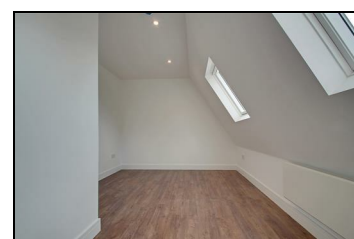
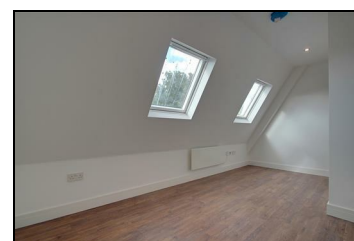
**£1,550 PER CALENDAR MONTH**

A 2 double bedroom, 2 bathroom top floor flat. The accommodation over 800 sqft, features contemporary reception/ kitchen both giving direct access to a private roof terrace with panoramic views. Modern bathroom and en-suite shower room to the master bedroom.

Available: Immediately

Location: The property is located in a parade of well-established shops. The property is well served by public transport with good road access to Central London via Western Avenue (A40) and Greenford Road.

- 2 Double Bedrooms
- 2 Bathrooms
- Private Roof Terrace
- Wood flooring
- Penthouse Flat



Energy Efficiency Rating		Environmental Impact (CO <sub>2</sub> ) Rating	
Current	Potential	Current	Potential
73	82	31	82

Energy Efficiency Rating: 73 (Current), 82 (Potential). Environmental Impact (CO<sub>2</sub>) Rating: 31 (Current), 82 (Potential).