

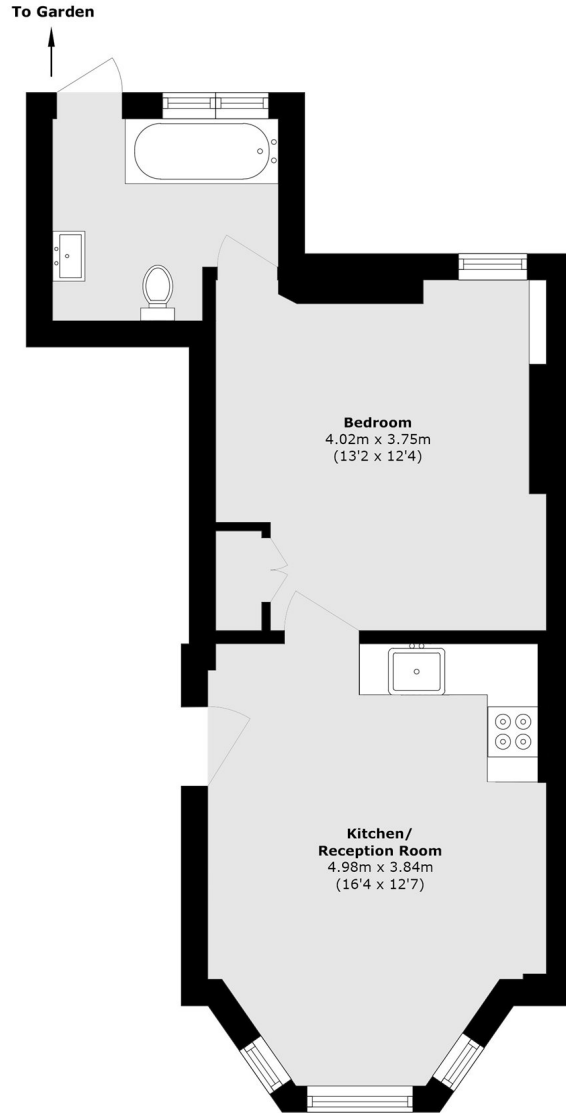


Avenue Crescent, W3

£420,000

An immaculate one-bedroom garden flat in a period property within the sought-after Mill Hill Conservation Area. Located on the raised ground floor, it offers share of freehold and direct access to a large landscaped garden.

Avenue Crescent is within half a mile of both Acton Town (Piccadilly and District lines) and South Acton (Overground) stations both of which provide excellent access into town.



Total area (approx.): 38.4 sq. m (413.3 sq. ft)

Robertson Smith & Kempson Acton Sales
137 High Street, Acton,
London, W3 6LY
020 8896 3996
actonsales@robertsonsmithandkempson.co.uk

Energy Rating: . We aim to make our particulars both accurate and reliable. However they are not guaranteed; nor do they form part of an offer or contract. If you require clarification on any points then please contact us, especially if you're traveling some distance to view. Please note that appliances and heating systems have not been tested and therefore no warranties can be given as to their good working order.