

Loxford Gardens, N5

£685,000

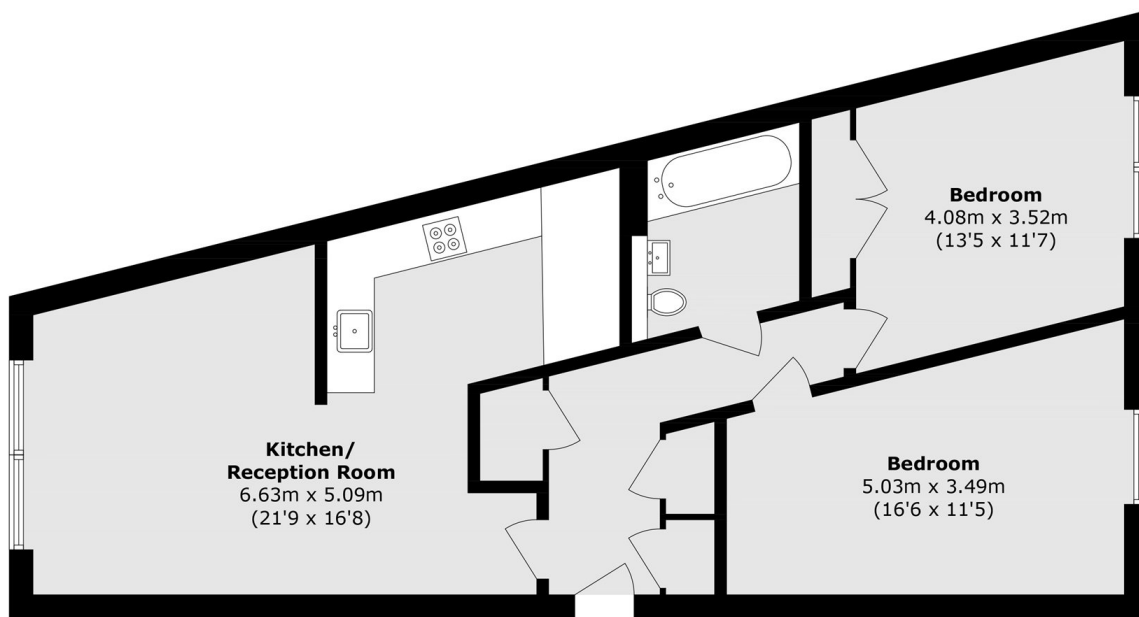
A bright first floor apartment set in Loxford Gardens. This spacious flat comprises of two double bedrooms, floor to ceiling windows, modern kitchen and benefits from access to landscaped communal gardens.

Loxford Gardens is located close to all of the delicatessens and cafés of Highbury Barn. Arsenal (Piccadilly line), Highbury & Islington (Victoria Line/Overground) and Canonbury (Overground) stations are all within easy reach.

Features

- Two Double Bedrooms
- Floor to Ceiling Windows
- 24 Hour Concierge
- Modern Kitchen
- Bike Storage
- Communal Gardens

Loxford Gardens, London, N5



First Floor

Total area (approx.): 72.8 sq. m (783.6 sq. ft)