

Rusper Road, Horsham

Offers Over £450,000

3 2 2

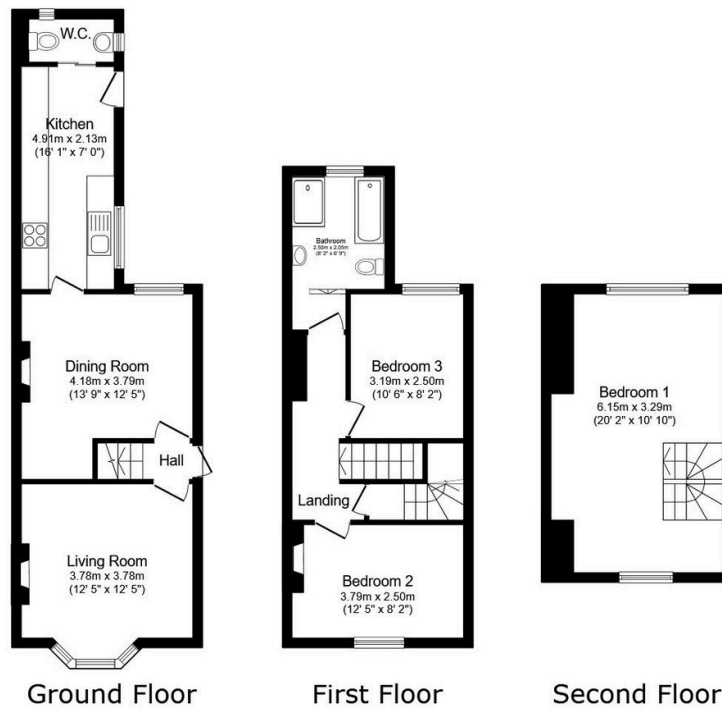


A charming Period Home arranged across Three Floors, located within a 'stones throw' of Littlehaven Station, boasting Three Double Bedrooms, Popular School Catchment, a Garden in Excess of 150ft, and with No Onward Chain.

Tenure: Freehold
Council Tax: Band D
EPC Rating: Current D - Potential C

Key Features

- Watch Our Video Tour
- No Onward Chain
- Period Features
- Two Separate Reception Rooms
- 0.1 Miles to Littlehaven Station
- Three Double Bedrooms
- Large 150ft+ Rear Garden
- Extended Family Home
- Accommodation Over Three Floors
- Popular School Catchment



Total floor area: 99.3 sq.m. (1,068 sq.ft.)

This floor plan is for illustrative purposes only. It is not drawn to scale. Any measurements, floor areas (including any total floor area), openings and orientations are approximate. No details are guaranteed, they cannot be relied upon for any purpose and do not form any part of any agreement. No liability is taken for any error, omission or misstatement. A party must rely upon its own inspection(s). Powered by www.Propertybox.io