



ST JOHNS GROVE | | ARCHWAY | N19 5RP

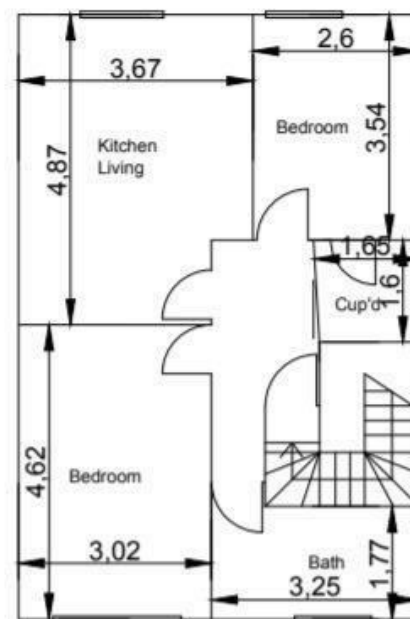
£545 PER WEEK

LIVINGS
SPACE
ESTATE AGENTS

ST JOHNS GROVE |
 ARCHWAY | N19 5RP
 £545 PER WEEK

LIVING SPACE ARE PLEASED OFFER THIS 2 DOUBLE BEDROOM TOP FLOOR PERIOD CONVERSION SITUATED ON A TREE LINED ROAD MINUTES WALK FROM ARCHWAY TUBE STATION & ALL SHOPS. THE PROPERTY IS OFFERED EITHER FURNISHED OR UNFURNISHED, LARGE OPEN PLAN KITCHEN LOUNGE, WOODEN FLOORING, LUXURY TILED BATHROOM, OFFERED FURNISHED OR UNFURNISHED. AVAILABLE 30TH SEPTEMBER 2025

- FLAT - FURNISHED OR UNFURNISHED
- 1 BATHROOM
- ENERGY RATING : D
- NO PARKING
- DISH WASHER
- 2 BEDS + 1 RECEPTION
- SHOWER
- NO SPECIAL ACCESSIBILITY
- WASHING MACHINE
- PETS ALLOWED



Energy Efficiency Rating		Current	Potential
<i>Very energy efficient - lower running costs</i>			
(92 plus)	A		
(81-91)	B		
(69-80)	C		
(55-68)	D		
(39-54)	E		
(21-38)	F		
(1-20)	G		
<i>Not energy efficient - higher running costs</i>			
England & Wales		EU Directive 2002/91/EC	

COUNCIL TAX BAND C
 EPC RATING

105 ST PAULS ROAD
 ISLINGTON
 LONDON
 N1 2NA
 020 7354 0505
 INFO@LSEA.CO.UK