

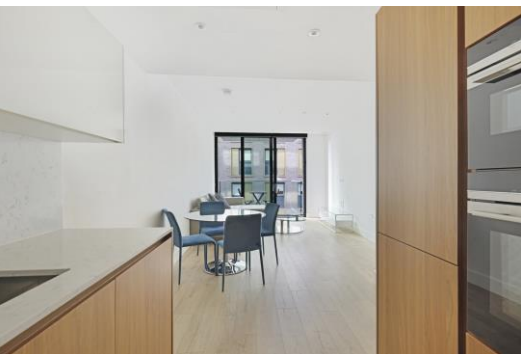


Piazza Walk

London, E1

£3,800 per month
(£876.92 per week)

A superb two double bedroom, two bathroom apartment set within this new build development in Goodmans Fields with two balconies with onsite facilities including; swimming pool, spa, gym, cinema room and 24 hr concierge.



Piazza Walk

London, E1

- New Build Development
- Two Bedroom Apartment
- Two Balconies
- Leisure Complex
- 24 Hour Concierge



Minimum Term: 11 months
Deposit Required: £4,384.62
Local Authority: Tower Hamlets
Council Tax Band: F
EPC Rating: To be confirmed
Furnished

Chestertons Tower Bridge Lettings

220 Tower Bridge Road
Tower Bridge
London
SE1 2UP
towerbridge@chestertons.co.uk
02073576911
chestertons.co.uk

Additional tenant charges apply (fees apply to non-AST tenancies only)
Tenancy Agreement Fee: £300
References per Tenant/Guarantor: £60
Inventory check (approx. £100 – £250 inc. VAT)
[chestertons.co.uk/property-to-rent/applicable-fees](https://www.chestertons.co.uk/property-to-rent/applicable-fees)

Neroli House, E1

Approx. Gross Internal Area 850 Sq Ft - 78.97 Sq M

Approx. Gross Balcony Area 100 Sq Ft - 9.29 Sq M



Fifth Floor

Floor Area 850 Sq Ft - 78.97 Sq M



Measured according to RICS IPMS2. Floor plan is for illustrative purposes only and is not to scale. Every attempt has been made to ensure the accuracy of the floor plan shown, however all measurements, fixtures, fittings and data shown are an approximate interpretation for illustrative purposes only. 1 sq m = 10.76 sq feet.

lpaplus.com

Date: 21/10/2024



This paper is 100% recyclable