



**Guide Price**  
**£325,000**

**Freehold**

2x  1x  2x 

**Gordon Road, Dartford,  
Kent, DA1**

**OVER 60?**

Secure this property  
for up to **59% less!**

*Wards*  
Helping you move forwards



## Main features

- Excellent end of terrace house ready to move into
- Desirable permit parking
- Handy additional loft room
- Larger than average wrap around garden
- Great travel links by road or rail and town centre nearby

## Accommodation

### GROUND FLOOR

Hallway  
 Lounge : 12'1 x 10'7 (3.69m x 3.23m)  
 Dining Area: 12'2 x 12'2 (3.71m x 3.71m)  
 Kitchen: 17'6 (5.34m) x 17'2 (5.24m) narrowing to 5'4 (1.63m)

### FIRST FLOOR

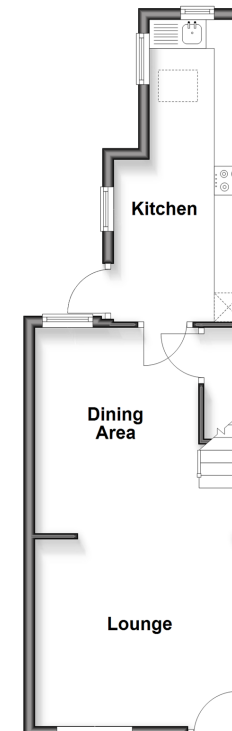
Landing  
 Bedroom 1: 12'3 x 10'10 (3.74m x 3.30m)  
 Bedroom 2: 12'1 x 7'10 (3.69m x 2.39m)  
 Bathroom: 9'2 x 7'6 (2.80m x 2.29m)

### OUTSIDE

Rear Garden  
 Permit Parking

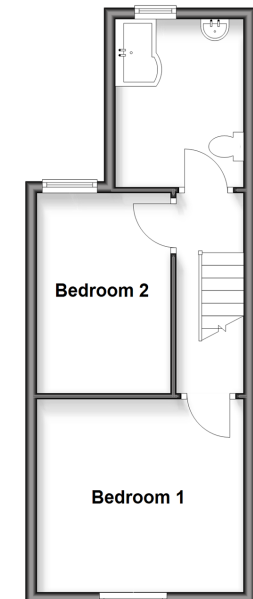
### Ground Floor

Approx. 36.1 sq. metres (388.1 sq. feet)



### First Floor

Approx. 32.7 sq. metres (352.0 sq. feet)



Call Dartford - 01322 288211 ■ [wardsofkent.co.uk](http://wardsofkent.co.uk)

■ Legal advice should be taken to verify fixtures/fittings, planning, alterations and/or lease details  
 ■ Through a Homewise Home For Life Plan people aged 60+ can secure this property for up to 59% less, by purchasing a Lifetime Lease

■ Appliances & services are untested, dimensions are approximate and floor plans are not to scale



10545816/20251028/LH/LH