



St. John's Wood High Street

St John's Wood, NW8

£2,000 per month
(£461.54 per week)

A well presented apartment set on St John's Wood high street and a short walk away from Regent's Park.

CHESTERTONS



St. John's Wood High Street

St John's Wood, NW8

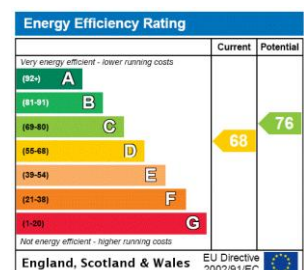
- A Well Presented Apartment located on St John's Wood High Street
- 1 Bedroom, 1 Bathroom
- Wooden Flooring
- Close to Regent's Park

A well presented one bedroom apartment located on St John's Wood High Street.

Property comprises; reception room with open plan kitchen, bathroom and double bedroom.

Located conveniently in the heart of St John's Wood with close access to all amenities and underground station (Jubilee Line).

Minimum Term: 6 months
Deposit Required: £2,307.69
Local Authority:
Council Tax Band: D
EPC Rating: C
Furnished



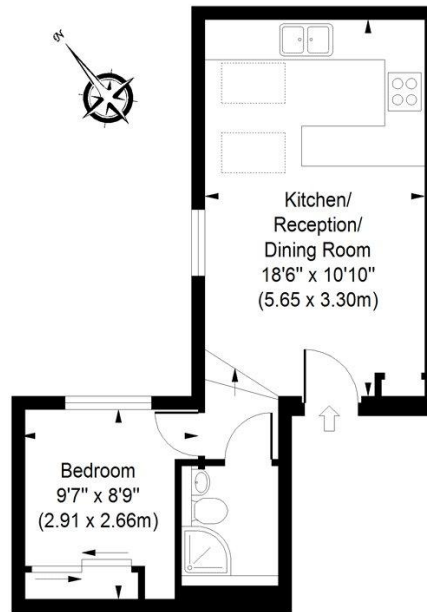
Chestertons St John's Wood Lettings

105 St. John's Wood Terrace
London
NW8 6PL
stjohnslettingsusers@chestertons.co.uk
02030408622
chestertons.co.uk

Additional tenant charges apply (fees apply to non-AST tenancies only)
Tenancy Agreement Fee: £300
References per Tenant/Guarantor: £60
Inventory check (approx. £100 – £250 inc. VAT)
chestertons.co.uk/property-to-rent/applicable-fees

St John's Wood High Street

Approximate Gross Internal Area
317 sq ft / 29.44 sq m



Second Floor

ILLUSTRATION FOR IDENTIFICATION PURPOSES ONLY

ALL MEASUREMENTS ARE MAXIMUM, AND INCLUDE WINDOW BAYS AND WARDROBES WHERE APPLICABLE
THIS PLAN MUST NOT BE REPRODUCED BY ANY OTHER PERSON WITHOUT PERMISSION

