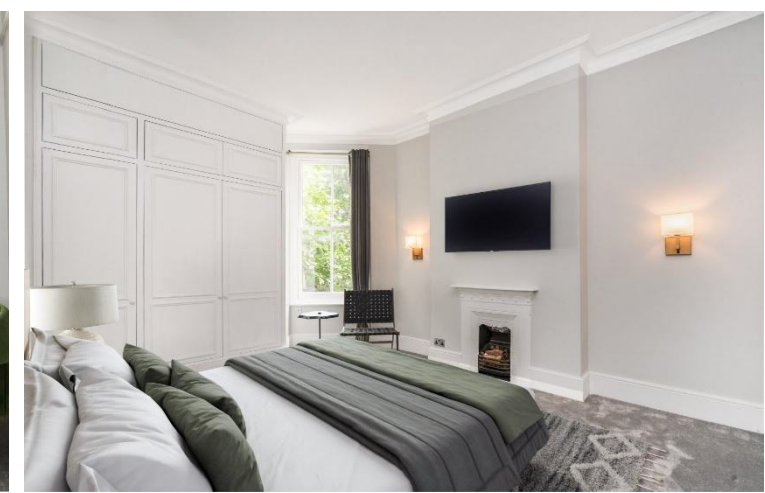




Iverna Court  
Kensington, W8

CHESTERTONS





A spacious lateral three-bedroom apartment located in this well run and popular portered block just off Kensington High Street. The property is located on the second floor, having wonderful views of the garden square from the spacious double reception.

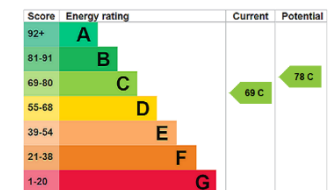
There is a separate eat-in kitchen, a master bedroom with en-suite bathroom (separate shower), a further good size double and a single bedroom. There is also a family bathroom, guest WC and good storage throughout. Comes with lift and porter.

“The photos of the property are real, however some of the furniture and furnishing items have been computer generated for illustration purposes only.”

- Lateral apartment portered mansion block
- 3 Bedrooms Double reception, Eat in kitchen, 2 Bathrooms
- 2nd floor overlooking the square with lift and porter

### £7,000 pcm

Additional tenant charges apply (fees apply to non-AST tenancies only)  
 Tenancy Agreement Fee: £300  
 References per Tenant/Guarantor: £60  
 Inventory check (approx. £100 – £250 inc. VAT)  
[chestertons.co.uk/property-to-rent/applicable-fees](http://chestertons.co.uk/property-to-rent/applicable-fees)



**Minimum Term:** 12 months  
**Deposit Required:** £9,692.31  
**Local Authority:** Kensington and Chelsea  
**Council Tax Band:** G  
**EPC Rating:** C  
**Unfurnished**

### Chestertons Kensington Lettings

116 Kensington High Street  
 Kensington  
 London  
 W8 7RW

[kensingtonlettingsusers@chestertons.co.uk](mailto:kensingtonlettingsusers@chestertons.co.uk)  
 02079377260

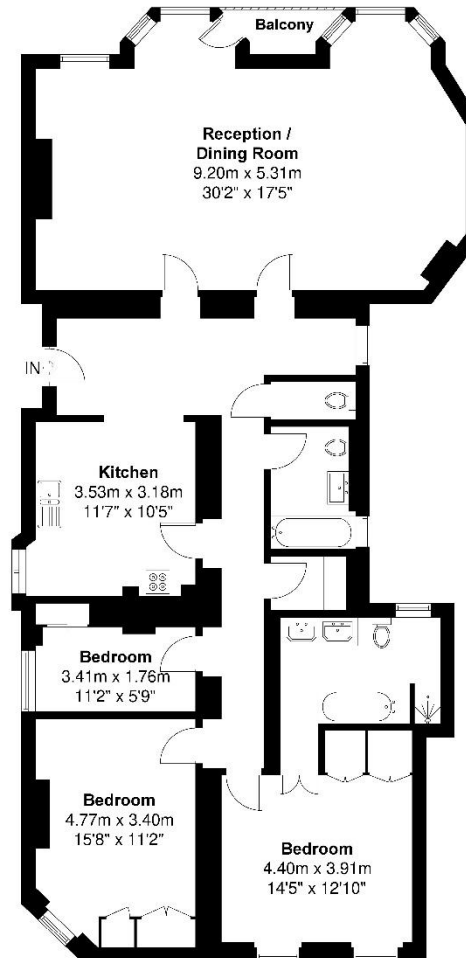
## Iverna Court, London, W8s

Approximate Floor Area = 148.4 Sq m / 1597 Sq ft

Balcony = 1.7 Sq m / 18 Sq ft

Total = 150.1 Sq m / 1615 Sq ft

For Illustrative Purposes Only NOT TO SCALE



This Floorplan is being produced in accordance with RICS Property Measurements Standards (PMS2 Residential) Floorplan was produced for Chestertons. Produced by Frame Focus Studios

Chesterton UK Services Limited trading as Chestertons for themselves and for the vendor of this property whose agents they are, give notice that (i) these particulars do not constitute any part of an offer or contract, (ii) all statements contained within these particulars are made without responsibility on the part of Chestertons or the vendor, (iii) whilst made in good faith, none of the statements contained within these particulars are to be relied upon as a statement or representation of fact, (iv) any intending purchasers must satisfy themselves by inspection or otherwise as to the correctness of each of the statements contained within these particulars, (v) the vendor does not make or give either Chestertons or any person in their employment any authority to make or give representation or warranty whatsoever in relation to this property. Wide angle lenses may be used. ©Copyright Chestertons | Chesterton Global Ltd | Registered Office 5th Floor, The Lantern, 75 Hampstead Road, London, NW1 2PL Registered Company Number 05334580.



This paper is  
100% recyclable