



Cricklewood Lane, NW2

£550,000

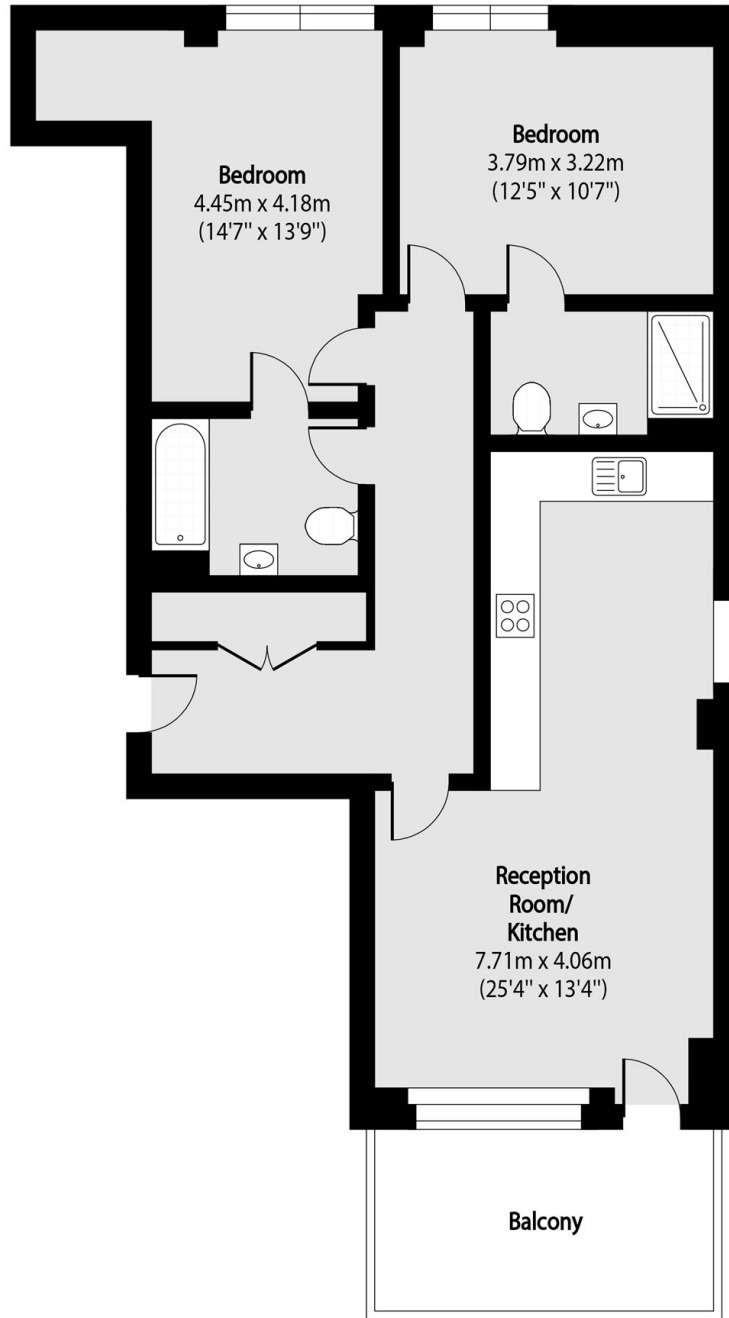
This stylish two bedroom, two bathroom flat offers bright and spacious open-plan living, with modern, newly refurbished fixtures and fittings. The property also benefits from a generously sized balcony, built in storage, access to a well maintained communal garden and is being offered chain free.

Located on Cricklewood Lane, situated a short distance from Cricklewood station (Thameslink) and David Lloyd Gym as well as numerous road connections including the A406, A41 and the M1.

Features

- Two Double Bedrooms
- Two Bathrooms
- Open Plan Living
- Private Balcony
- Lease In Excess Of 240 Years
- Chain Free

Cricklewood Lane,
London, NW2



Total area (approx): 77.94 sq m (839 sq. ft)

Balcony total area (approx): 9.02 sq m (97 sq. ft)