

# Jonathan Hunt

LETTING AGENCY

20 High Street Ware SG12 9BX

Tel: 01920 411090

8 High Street Buntingford SG9 9AG

Tel: 01763 272727

info@jonathan-hunt.co.uk

www.jonathanhunt.co.uk



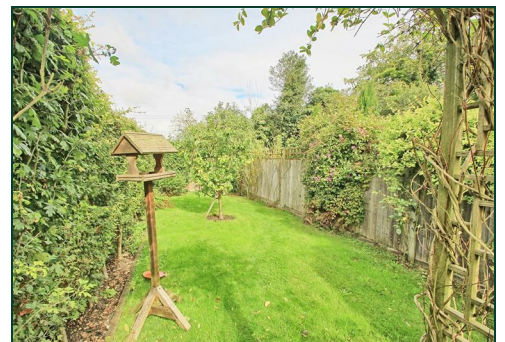
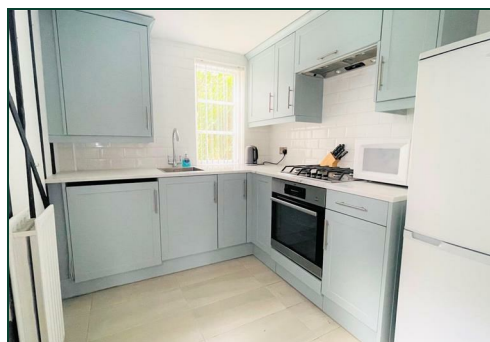
**35 High Street, Hunsdon, Hertfordshire, SG12 8NH**

**£1,495 Per Month**

JONATHAN HUNT LETTINGS are pleased to offer this Grade II listed cottage located in the heart of the sought after village of Hunsdon. The property boasts a wealth of character features, a beautiful rear garden extending to approximately 120 ft and an outbuilding with power and light connected. AVAILABLE from the end of July

REFERENCES - Please only enquiry if you pass the reference criteria

- Gross Income: Minimum £44,850
- NO CCJ's, IVA's or history of bad credit
- Positive landlord reference (if applicable)



Buntingford Branch - Company No. 10303541 VAT No. 10303541

Ware Branch - Company No. 4759215 VAT No. 700174975

**LIVING AREA 18' x 13'9 (5.49m x 4.19m)**

Wonderful living and dining room with two brick built fireplaces, one with inset feature log burner.

**KITCHEN 8'4 x 7' (2.54m x 2.13m)**

Fitted wall and base units with integrated washing machine. Exposed wall timbers.

**BEDROOM ONE 12'9 x 9' (3.89m x 2.74m)**

Quaint bedroom with exposed timbers, feature fireplace, radiator.

**BEDROOM TWO 9' x 6'5 (2.74m x 1.96m)**

Feature fireplace, radiator.

**BATHROOM**

Suite comprising pedestal wash hand basin, low level w.c. and panel bath with shower attachment.

**REAR COURT YARD**

Fantastic garden of over 100ft with outbuilding giving power and light, patio area, rear lawn, vegetable plot, all leading off from a very pretty rear courtyard.

**PATIO AREA**

**LAWNED AREA**

**REAR LAWN**

**EXTERIOR**

**FRONT**

