

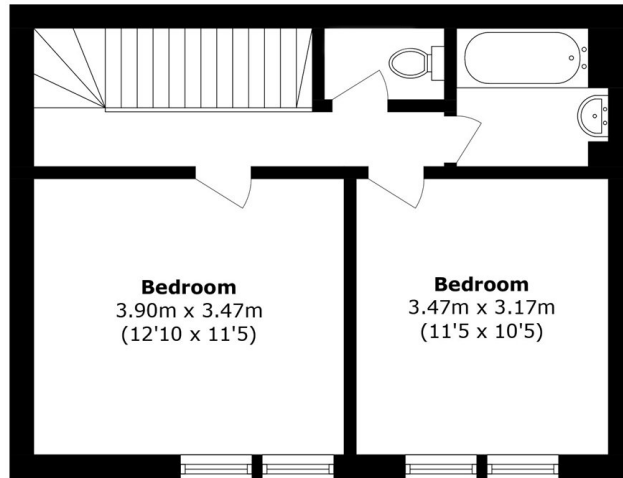


Cloysters Green, E1W

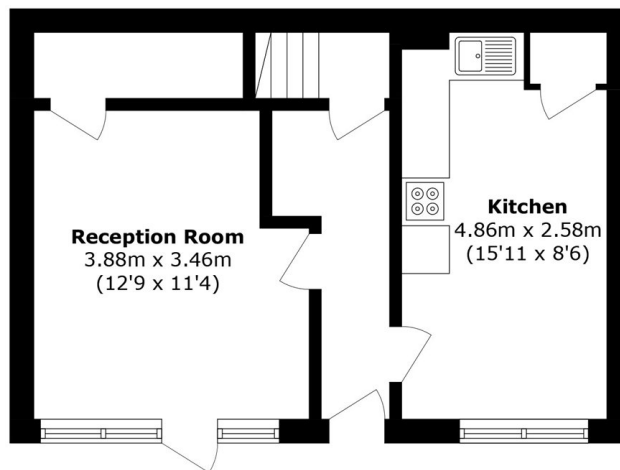
£2,450 Per month

 2  1  1  D

- Two Bedrooms
- Split Level
- Private Garden
- Separate Kitchen
- West Wapping
- Furnished



First Floor



To Garden

Ground Floor

Total area (approx.): 73.6 sq. m (792.2 sq. ft)

35A Wapping High Street,
London, E1W 1NR
020 7702 3456
ea2group.com