



## City Island Way, E14

£4,200 Per week

A truly desirable penthouse apartment, set within the popular development of London City Island. Complete of four bedrooms, two contemporary bathrooms and a wrap-around balcony; spanning over 1,140sqft of internal floor space.

London City Island is well-appointed for transport links via Canning Town Jubilee Station, in addition to being accessible to central Canary Wharf. Residents of the development enjoy an on-site 24/7 concierge service, gymnasium, pool and spa facilities.

### Features

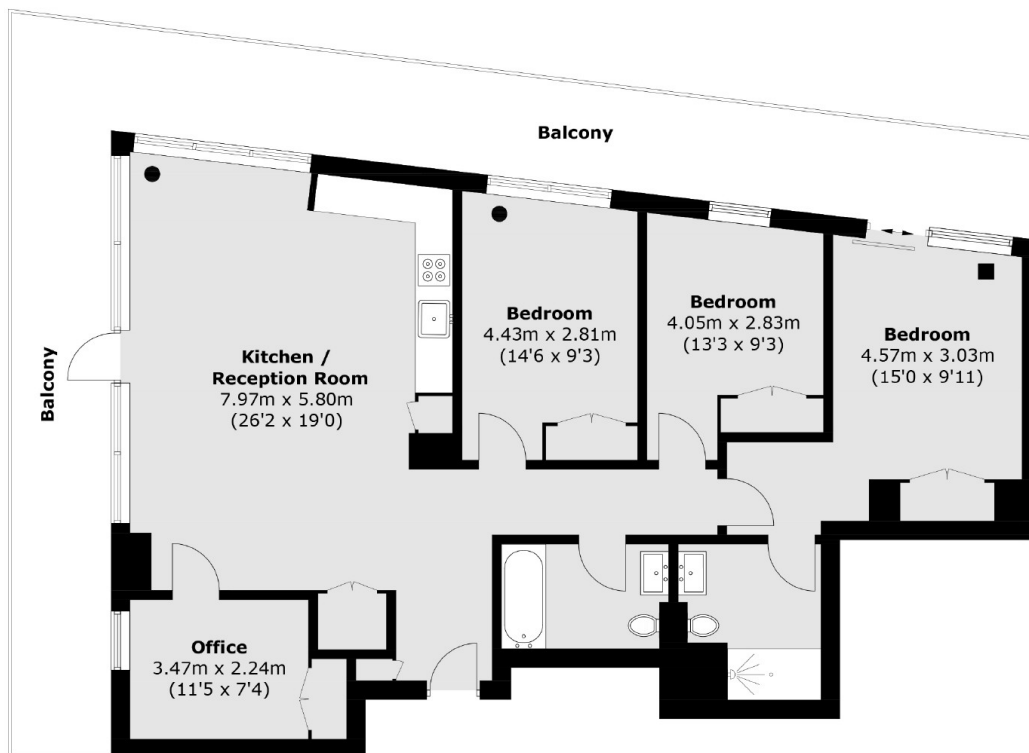
Penthouse Apartment  
Twenty-Second Floor  
Four Bedrooms  
Wrap-Around Balcony  
Parking Available  
On-Site Resident Facilities



**City Island Way, E14**



# City Island Way, London, E14



Total area (approx.): 103.9 sq. m (1,118.4 sq. ft)  
Balcony: 43.3 sq. m (466.1 sq. ft)