



**POOLE  
TOWNSEND**

# Dominion Street, Walney, Barrow-In-Furness, LA14 3BP

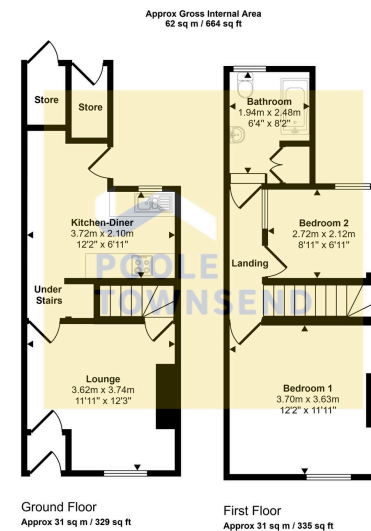
Offers In Region Of £115,000

2 1 1



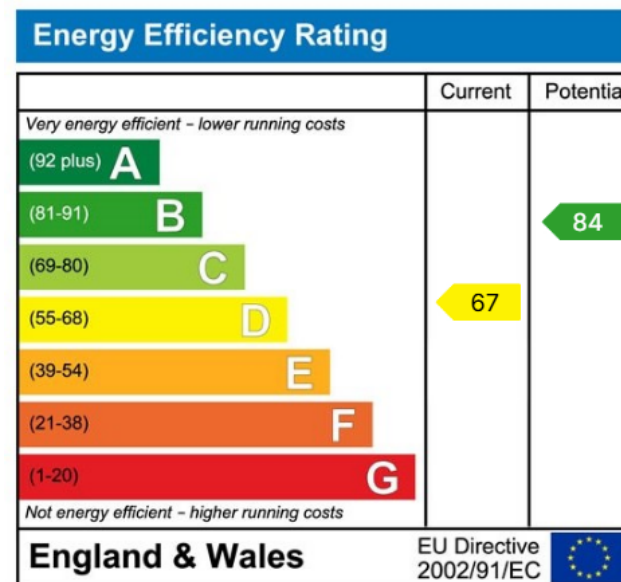
- Attractively Present Mid-Terrace Property
- Ideal Opportunity For First Time Buyers, Couples Or For Investors
- Open Plan Kitchen-Diner
- Double Glazing
- Two Outbuildings
- Situated In An Established And Popular Residential Area
- Two Comfortable Bedrooms
- Gas Central Heating
- Enclosed Yard
- No Upper Chain





This floorplan is only for illustrative purposes and is not to scale. Measurements of rooms, doors, windows, and any items are approximate and no responsibility is taken for any error, omission or mis-statement. Icons of items such as bathroom suites are representations only and may not look like the real items. Made with Made Snappy 360.

This attractively presented mid-terrace house is situated in an established and popular residential area, making it an ideal opportunity for first-time buyers, couples, or as an investment property. The living space comprises; two comfortable bedrooms, a well-appointed three-piece bathroom, a cosy lounge and an open plan kitchen-diner. The property benefits from a gas central heating system, double glazing, an enclosed yard with two useful outbuildings, and convenient on-street parking. Its popular location provides easy access to amenities including a bus service, schools, a Co-op, Tesco, and a community centre, and is just a short distance from the beach, Round House café and coastal walks.



Visit us at  
[www.pooletownsend.co.uk](http://www.pooletownsend.co.uk)  
[enquiries@pooletownsend.co.uk](mailto:enquiries@pooletownsend.co.uk)

We are open  
 Monday – Friday 9.00 – 5.00  
 Saturday 9.00 – 1.00

Barrow 01229 811811  
 Ulverston 01229 588111  
 Grange 015395 33316  
 Kendal 01539 734455  
 Milnthorpe 015395 62044