



Our View “A property that must be seen to be appreciated”

A stylish, modern recently refurbished apartment offering spacious accommodation.

The accommodation comprises the entrance hallway providing access to the open plan living/kitchen/dining area where you have a double glazed window to the front. A delightful newly fitted kitchen comprises a matching range of stylish wall and base level units with a mixer tap sink and drainer. Built in appliances include an oven and gas hob with an extractor hood and light above and there is space for fridge freezer. From the entrance hallway you have access to a spacious double bedroom with a double glazed window to the front and a door leading to the delightful en suite shower room which

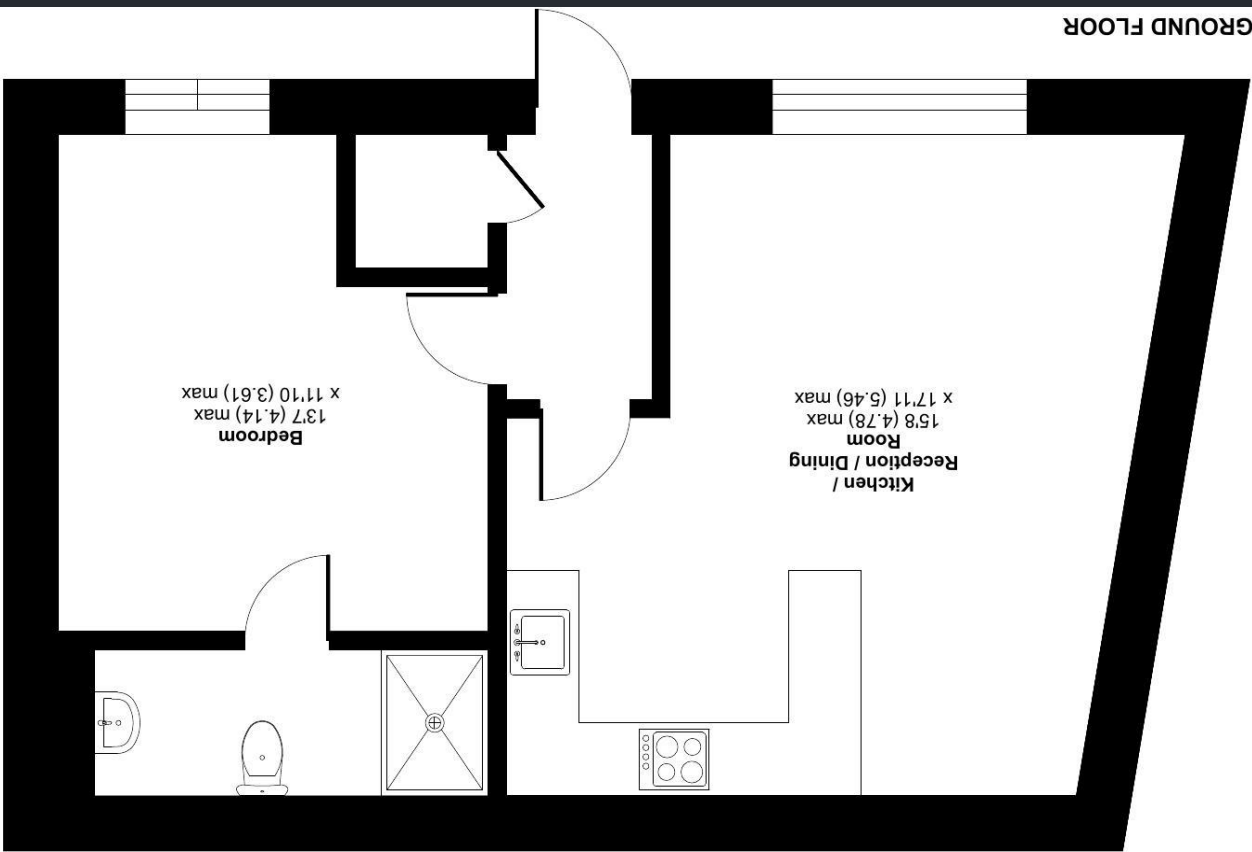
features a low-level flush WC, pedestal wash hand basin with storage beneath and a walk in shower fed from mains and there are part tiled walls and tiled flooring. From the entrance hallway there is useful spacious storage cupboard housing the combination boiler. Externally there is a small area to the front of the property providing space for a table and chairs and external dining. The property is conveniently situated close to the centre of Newton Abbot, which has a wide range of amenities and facilities, including hospital, primary and secondary schools, leisure centre, various shops, superstores, race course, and rail station on the London Paddington - Plymouth mainline. There is good dual carriageway access to Plymouth, Exeter and the motorway network beyond.

- Delightful apartment
- Superb open plan kitchen / living space
- Double bedroom
- High specification Shower room
- Private entrance
- Town centre location
- Close to train station and amenities





GROUND FLOOR



Oak Place, Newton Abbot, TQ12
Approximate Area = 533 sq ft / 49.5 sq m
For identification only - Not to scale

