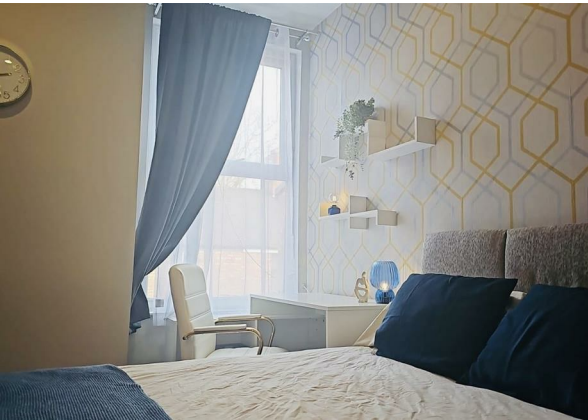
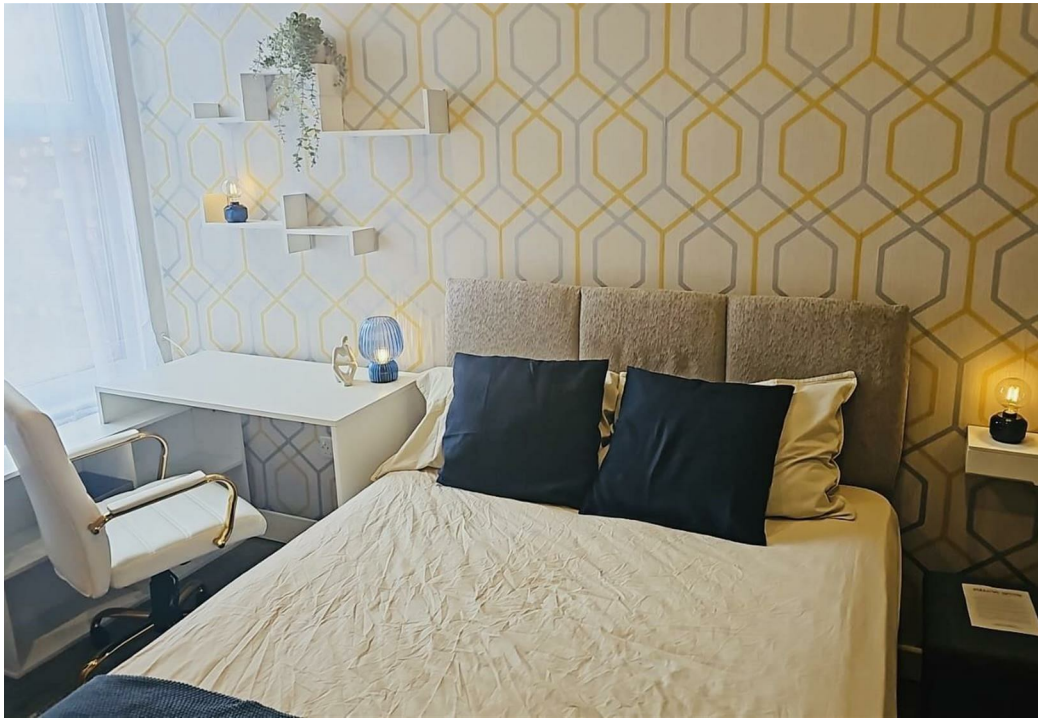


Ince Avenue, Anfield, L4 7UX

£465 Per Month

Council Tax Band: A



****Modern Double Room in Professional House Share – Anfield, Liverpool L4****

****Address:** Ince Avenue, Anfield, Liverpool L4**

****Rent:** £465 PCM** | ****Deposit:** £300******

****Available From:** 1st July 2026****

Looking for a clean, comfortable home in Liverpool with everything included? This spacious, fully furnished double room is available in a friendly six-bedroom professional house share, offering a welcoming environment and excellent value for working professionals.

****The Room****

Your bright double room comes fully furnished with:

- * Comfortable double bed and quality mattress
- * Spacious wardrobe and chest of drawers
- * Desk, chair and lamp – ideal for working or studying from home

**The House**

Designed for comfortable shared living, the property offers:



Open House Liverpool



Energy Efficiency Rating		
	Current	Potential
Very energy efficient - lower running costs		
(92 plus) A		
(81-91) B		
(69-80) C		
(55-68) D		
(39-54) E		
(21-38) F		
(1-20) G		
Not energy efficient - higher running costs		
	53	
England & Wales	EU Directive 2002/91/EC	