



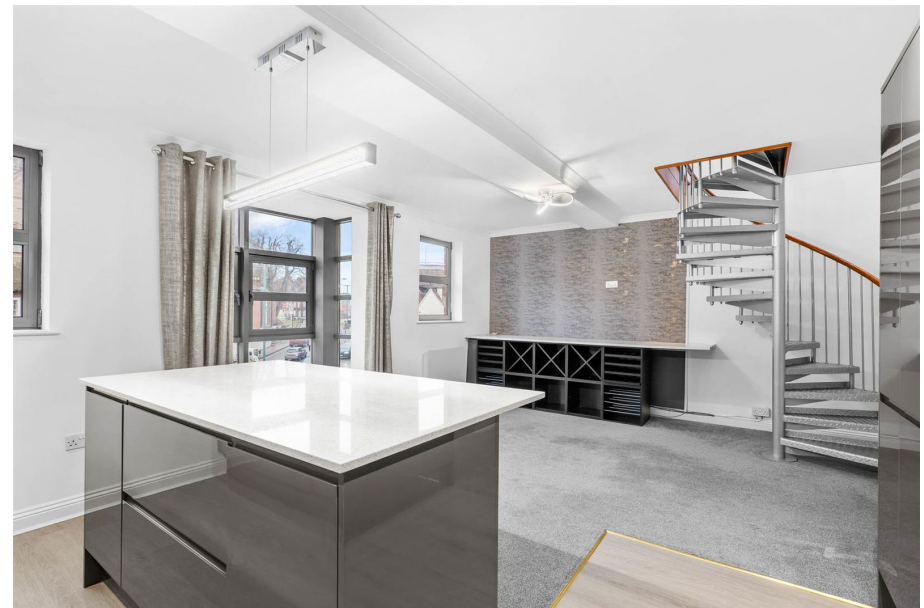
Allan Morris
estate agents

 **MAYFAIR**
OFFICE GROUP

67 Friar Street, Worcester. WR1 2NA

Offers Over £250,000

🛏 2 🚿 2 🛋 1



A stunning and most spacious Duplex Penthouse Apartment, situated in the heart of Worcester City with spectacular views of Worcester Cathedral.

Accommodation briefly comprises: Entrance Hall with useful storage cupboard, large refitted Kitchen/Dining Area and Master Bedroom with re-fitted En-Suite. On the first floor: Large open-plan Sitting/ Study Area and Guest Bedroom with refitted En-Suite.

LOCATION:

The Apartment is situated along the historic Friar Street area of Worcester, giving easy access to local amenities, such as shops, public houses and major transport links, to include Worcester Foregate Street Railway Station.

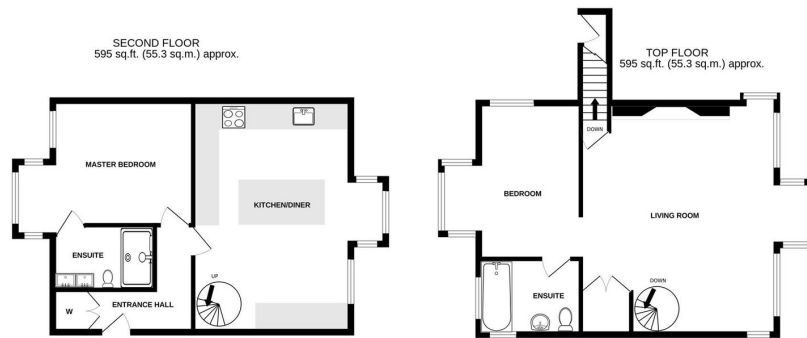
Kitchen / Diner: - 6.3m x 4.29m (20'8" x 14'1")

Bedroom 1: - 5.59m x 3.81m (18'4" into bay x 12'6" max)

Living Room: - 6.27m x 6.1m (20'7" max x 20'0" max to bay)

Guest Bedroom: - 4.06m x 2.72m (13'4" x 8'11")





TOTAL FLOOR AREA: 1190 sq.ft. (110.6 sq.m.) approx.

Whilst every attempt has been made to ensure the accuracy of the floorplan contained here, measurements of doors, windows, rooms and any other items are approximate and no responsibility is taken for any error, omission or mis-statement. This plan is for illustrative purposes only and should be used as such by any prospective purchaser. The services, systems and appliances shown have not been tested and no guarantee as to their operability or efficiency can be given.
Made with Metropix ©2023

- Duplex Penthouse Apartment • 2 Double En-Suite Bedrooms
- Large Open-Plan Sitting Room with feature fireplace
- Architectural character throughout
- Views over Worcester Cathedral
- Central location

