

ALLDAY
& MILLER



Torcross Road, Ruislip, HA4 0TD
£735,000

5 2 2 D



Torcross Road, Ruislip, HA4 0TD

£735,000

- Five Bedroom End of Terrace
- Potential for Extensions (Subject to Planning)
- Short Drive to M40/M4/M25
- Within Reach of South Ruislip Station
- Large Garden
- Two Bathrooms
- Garage to Rear with Access
- Downstairs W.C with En Suite
- Nearby to Highly Regarded Schools
- No Upper Chain

Description

Upon entering, you are greeted by a welcoming atmosphere that flows seamlessly throughout the property. The ground floor features a convenient downstairs bedroom complete with an ensuite, reception room provides a comfortable space for relaxation, while a second reception room effortlessly transitions into the dining area, the fitted kitchen completes this floor.

Ascending to the first floor, you will discover four well proportioned bedrooms, each offering ample space and natural light. A family bathroom serves this level, ensuring convenience for all.

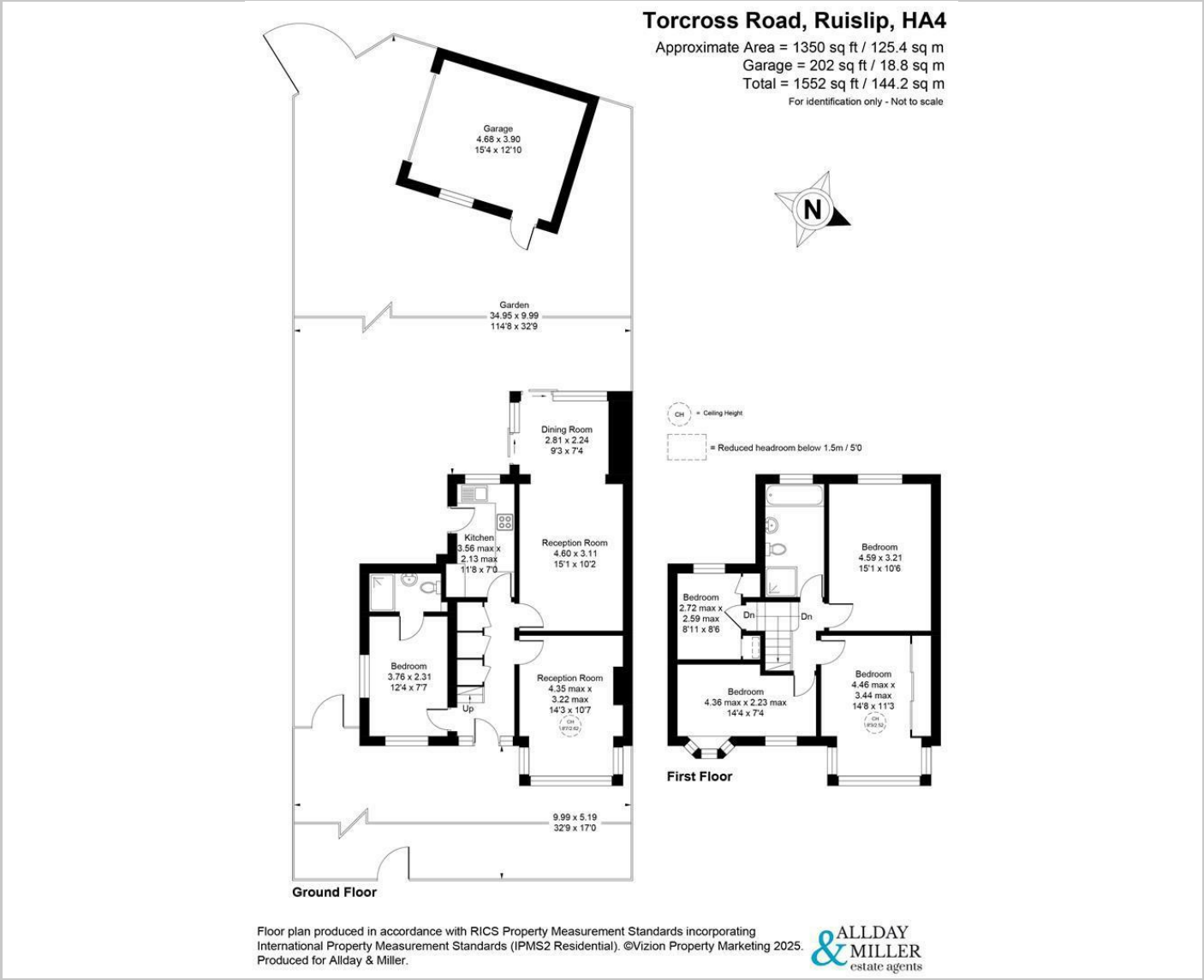
Externally, the property boasts a lovely rear garden, predominantly laid to lawn, providing a perfect outdoor space for dining and entertainment. Additionally, a garage offers valuable storage or workshop space.

Situation

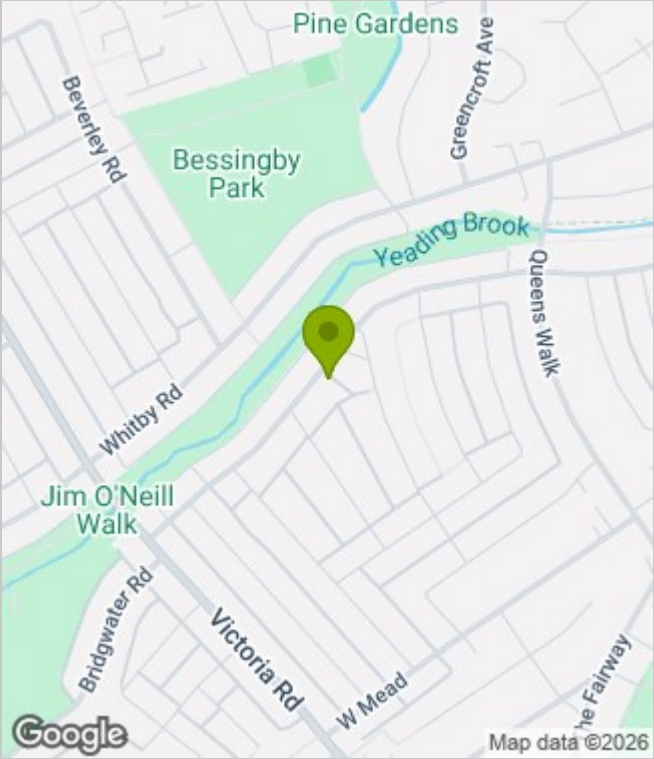
Torcross Road is a very popular location, conveniently located close to parks, transport and amenities at Ruislip. For the motorist, there are excellent connections to Central London via the M25 and the M40. Commuters are well suited with a number of London underground stations in the area. Ruislip Manor is a short distance away so travelling into the City via the Metropolitan or Piccadilly lines could not be easier. Other nearby stations include Ruislip Gardens (Central line) or South Ruislip, serviced by both tube and train lines into Marylebone Station in just 25 minutes, with regular trains every 15 minutes. For families, there are a number of highly regarded schools that cater for children of all ages within close proximity including Lady Banks, Ruislip High and Sacred Heart Primary School. Shenley Park and Ruislip Rugby Fields are all a short walk away.



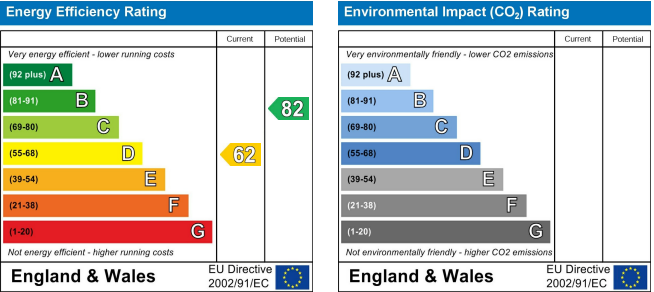
Floor Plans



Area Map



Energy Performance Graph



These particulars, whilst believed to be accurate are set out as a general outline only for guidance and do not constitute any part of an offer or contract. Intending purchasers should not rely on them as statements of representation of fact, but must satisfy themselves by inspection or otherwise as to their accuracy. No person in this firms employment has the authority to make or give any representation or warranty in respect of the property.