

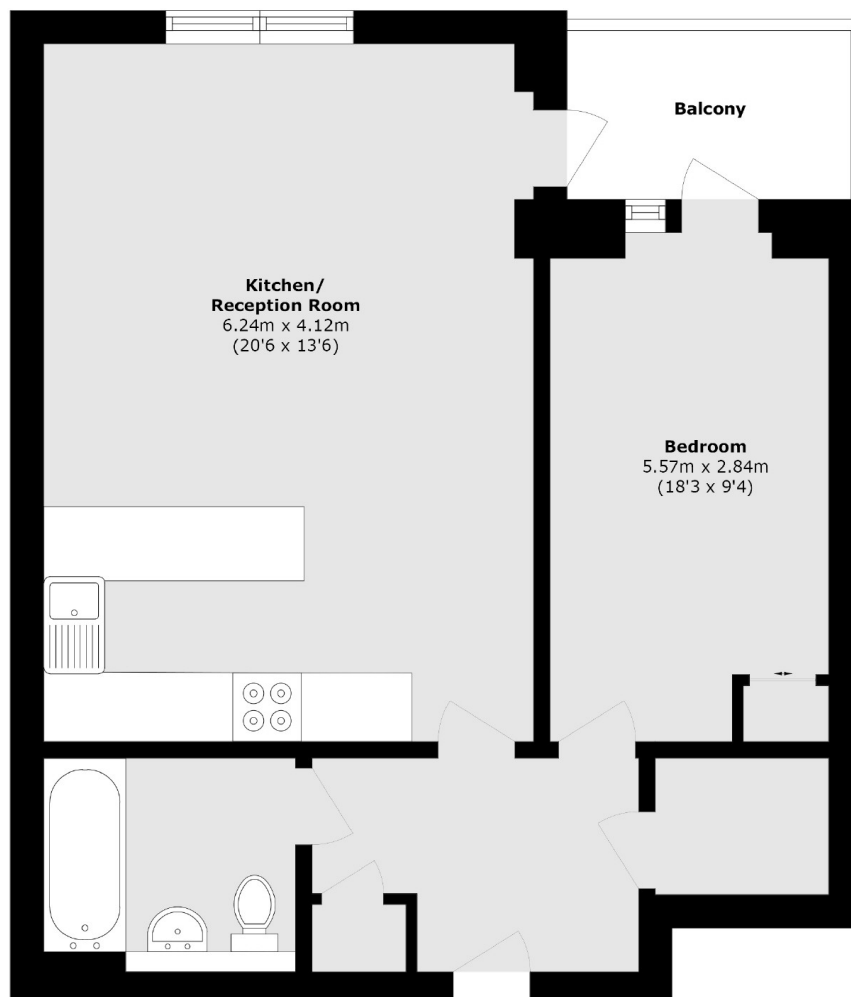


RATHBONE STREET, E16

£325,000

A modern, first floor property located near Canning town. This one bedroom property offers an open plan reception/kitchen with space to dine and access to a private balcony, a sizable double bedroom and access to a communal garden for residents.

- One Double Bedroom
- Private Balcony
- Modern Finish
- Communal Gardens
- Great Transport Links
- Built In Storage



Total area (approx.): 52.6 sq. m (566.1 sq. ft)
Balcony area (approx.): 4.95 sq. m (53.2 sq. ft)

LiFE RESIDENTIAL

16 Royal Crest Avenue,
London, E16 2TQ
Sales: 020 3846 3332
Lettings: 020 3846 3311

Energy Rating: B. We aim to make our particulars both accurate and reliable. However they are not guaranteed; nor do they form part of an offer or contract. If you require clarification on any points then please contact us, especially if you're traveling some distance to view. Please note that appliances and heating systems have not been tested and therefore no warranties can be given as to their good working order.