



Apartment 5, Martin House, 57 Willow Drive
Leek



Estate Agents. Valuers. Auctioneers. Chartered Surveyors
Part of the Bagshaws Partnership

Apartment 5, Martin House, 57 Willow Drive

Leek
Staffordshire
ST13 7FG

- * A very well presented one bedroom second floor apartment located on the popular St Edward's park development in Cheddleton.
- * Set in beautiful surrounding countryside the accommodation briefly comprises: Entrance Hall, Living Room with open plan Kitchen Area with integrated appliances and balcony feature to the front aspect, Double Bedroom with fitted wardrobes and Bathroom.
- * The property also has the benefit of gas central heating, double glazing and allocated parking.
- * The property may be of interest to landlords or first time buyers.
- * An early appointment to view is strongly recommended.



Offers In The Region Of £110,000



1



1



1



C



Leek - 01538 383344



leek@buryandhilton.co.uk





General Information

Entrance Hall

Radiator. Loft access. Storage cupboard.

Living Room / Kitchen Area 14'4 x 25'7 (4.37m x 7.80m)

Range of fitted wall and base units. Stainless steel sink unit with drainer and mixer tap. Integrated fridge, freezer, dishwasher and washer / dryer. Electric hob and oven with extractor unit above. Cupboard housing central heating boiler. Radiator x 2. Work space desk. Wall lights x 3. Access to balcony.

Bedroom 11' x 10'4 (3.35m x 3.15m)

Radiator. Fitted wardrobes.

Bathroom 11' x 9'11 (3.35m x 3.02m)

Bath with shower over. W.c. Wash basin. Heated towel rail.

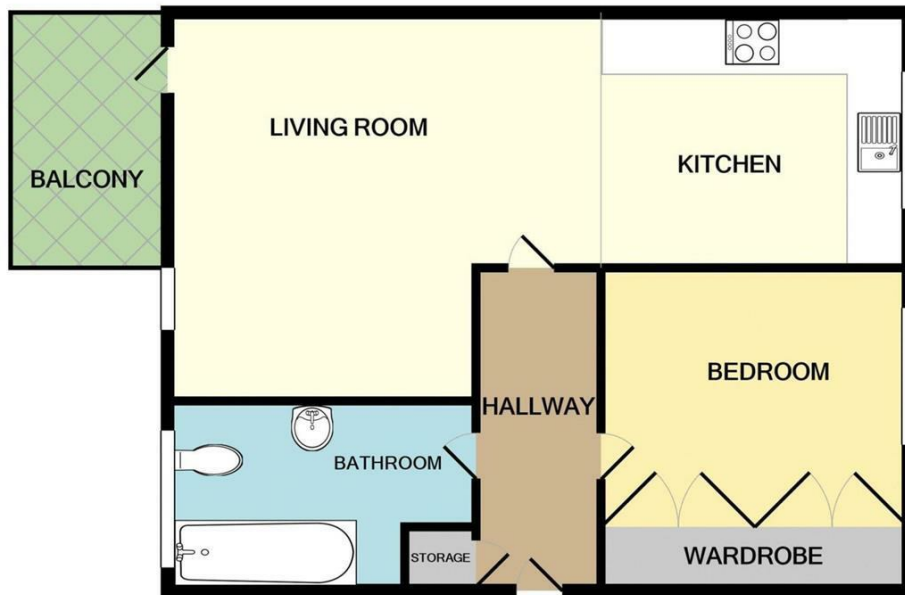
Outside

Use of communal grounds. Allocated parking space.

Agents Notes

The vendor has informed the current ground rent and maintenance charge is £1,074 every 6 months and there are 103 years remaining on the lease.





TOTAL APPROX. FLOOR AREA 554 SQ.FT. (51.5 SQ.M.)

Whilst every attempt has been made to ensure the accuracy of the floor plan contained here, measurements of doors, windows, rooms and any other items are approximate and no responsibility is taken for any error, omission, or mis-statement. This plan is for illustrative purposes only and should be used as such by any prospective purchaser. The services, systems and appliances shown have not been tested and no guarantee as to their operability or efficiency can be given
 Made with Metropix ©2022

Agents Notes

Bury & Hilton have made every reasonable effort to ensure these details offer an accurate and fair description of the property. The particulars are produced in good faith, for guidance only and do not constitute or form an offer or part of the contract for sale. Bury & Hilton and their employees are not authorised to give any warranties or representations in relation to the sale and give notice that all plans, measurements, distances, areas and any other details referred to are approximate and based on information available at the time of printing.



6 Market Street, Leek, Staffordshire, ST13 6HZ

T: 01538 383344

E: leek@buryandhilton.co.uk

www.buryandhilton.co.uk

Part of the Bagshaws Partnership

Offices in:

Ashbourne	01335 342201
Bakewell	01629 812777
Buxton	01298 27524
Leek	01538 383344
Uttoxeter	01889 562811

