



Marlborough Road, Chelmsford

Guide Price **£575,000**



Marlborough Road

Chelmsford, Chelmsford

Guide Price £575,000-£600,000 A striking modern four double bedroom town house offering kitchen/dining room, spacious first floor reception room, two stylish bathrooms, attractive garden and car port, all conveniently positioned within highly sought-after Old Moulsham providing an excellent family home.

Council Tax band: F

Tenure: Freehold

EPC Energy Efficiency Rating: C

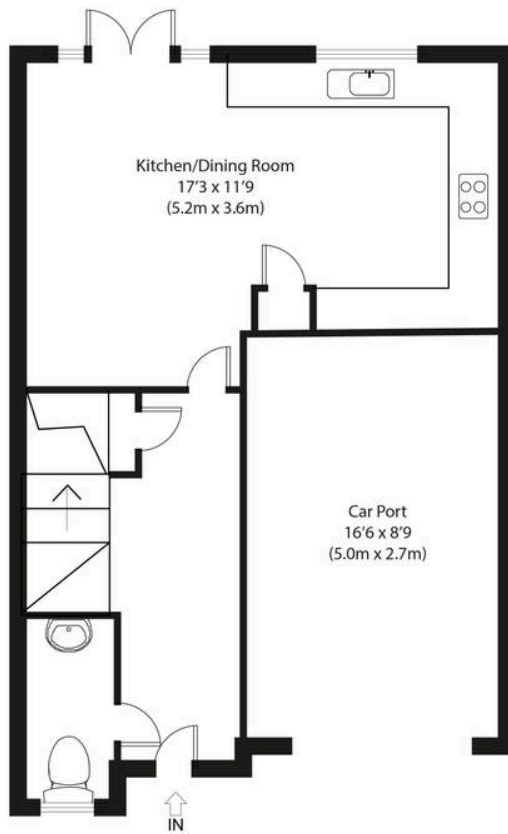
EPC Environmental Impact Rating:

- Four double bedroom modern end of terrace town house
- Moments from vibrant Moulsham Street offering an array of independent restaurants, bars and eateries
- Car port providing off street parking
- Impressive first floor reception room
- Three fabulous floors of flexible living
- Generous sized garden
- Downstairs cloakroom
- Solar panels - ask agent for more information
- Spacious kitchen/dining room
- Excellent transport links
- Two attractive bathrooms

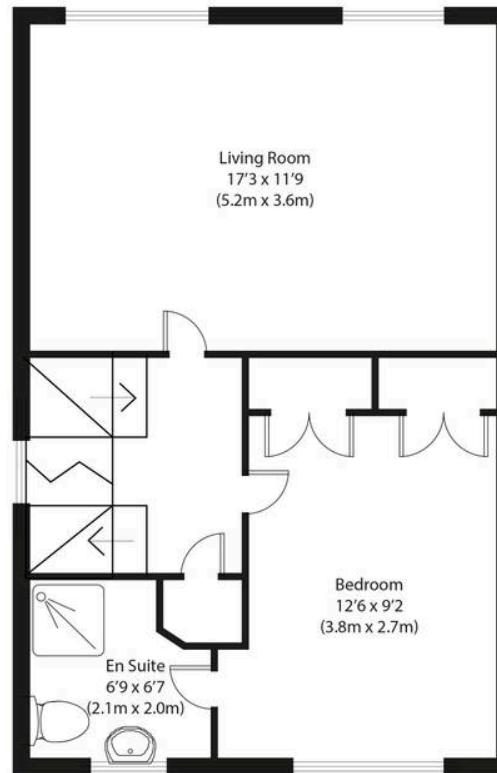




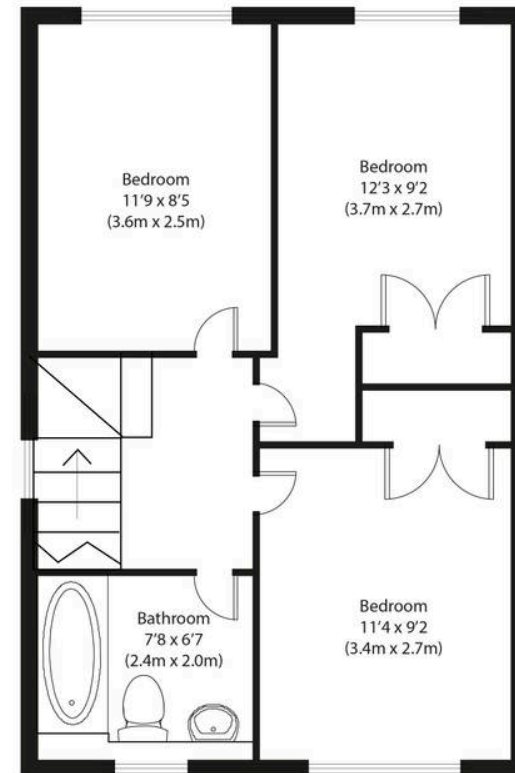




Ground Floor



First Floor



Second Floor


Approximate Gross Internal Area
1370 sq ft (127 sq m)

Disclaimer: Floorplan measurements are approximate and are for illustrative purposes only. While we do not doubt the floor plan accuracy and completeness, you or your advisors should conduct a careful, independent investigation of the property in respect of monetary valuation. copyright www.photohausgroup.co.uk



Nested Chelmsford

Fora, 9 Dallington Street, London - EC1V 0LN

01245 970045 • jack.gundry@nested.com • nested.com/chelmsford