



Claremont Road, TW11

£1,895,000

This beautifully presented semi-detached family home is set on a sought-after road just moments from Teddington High Street. Full of charm and character, the house has been tastefully designed and styled throughout by the current owners.

Situated in one of Teddington's premier roads, Claremont Road is a perfect spot as it is close to all amenities, transport to London and local schools. Teddington High Street is close by with plenty of shops, restaurants and cafés.

Features

- Five Bedrooms
- Semi-Detached
- Plantation Shutters
- Hand Built Kitchen
- Side Access
- Fitted Storage



Claremont Road, TW11

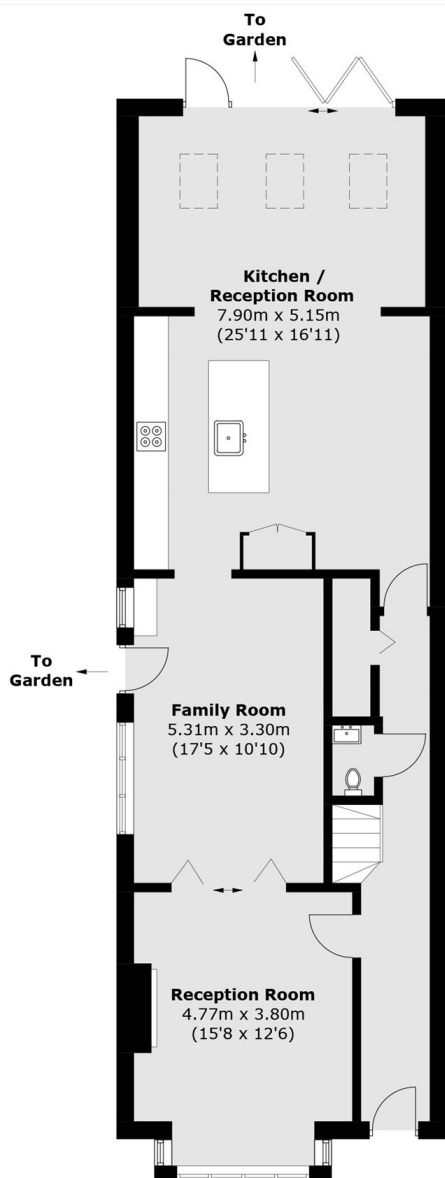
From the hallway, you are welcomed into two generous reception rooms, linked by elegant connecting doors that offer the flexibility to enjoy one expansive living space or two separate rooms as desired. Flooded with natural light and featuring a charming log-burning stove, this area flows effortlessly into the heart of the home; the beautifully modernised kitchen. Recently upgraded, it boasts a stylish central island, additional living and dining space, and full-width doors that open directly onto the rear garden, creating a wonderful indoor/outdoor feel.

On the first floor, you'll find three impressive double bedrooms along with a contemporary family bathroom, complete with a roll-top bath and an exposed brick feature wall. A separate utility room adds further practicality to this level. The converted loft provides two additional spacious double bedrooms, a modern bathroom, and ample storage.

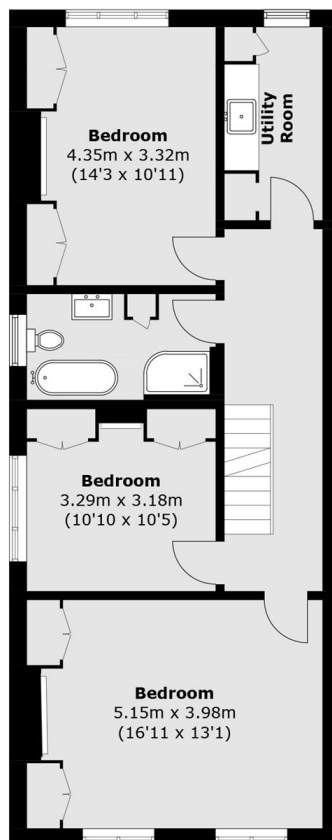
Outside, the landscaped garden features a generous lawn and a smart patio area perfect for entertaining along with a shed and convenient side access.



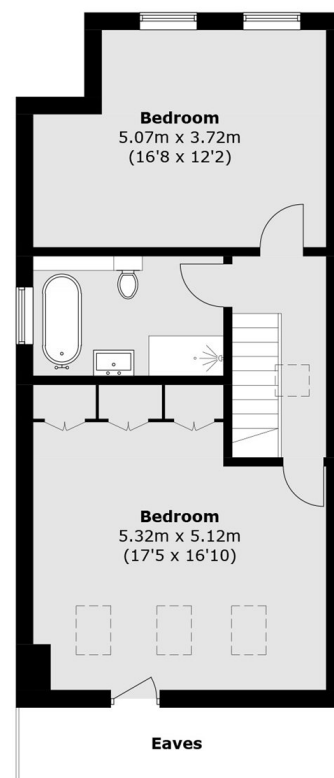
Claremont Road, Teddington, TW11



Ground Floor



First Floor



Second Floor

Total area (approx.): 221.2 sq. m (2,380.9 sq. ft)
(Excluding Eaves)