

**Trueman
Letting
Company**



19 Whitebines Farnham

£1,250 PCM

A two bedroom first floor apartment with newly fitted shower room and redecorated throughout within walking distance of the mainline Station and Town Centre. The Property has an allocated parking space.

EPC B COUNCIL TAX BAND B

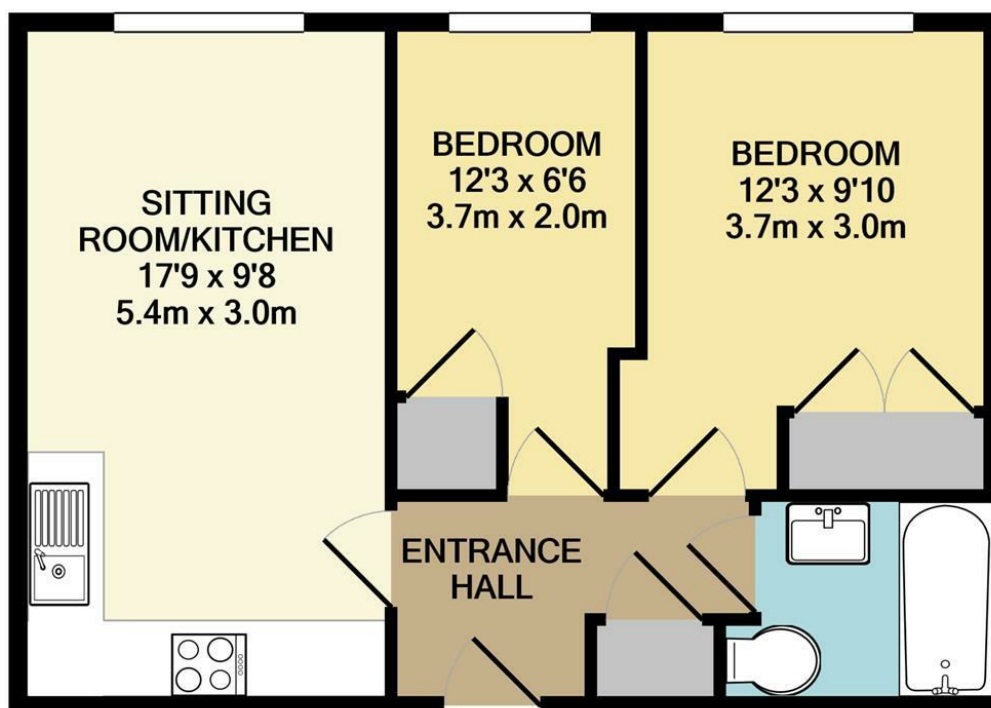


- Communal Entrance Hallway with Lift and Stairs to First Floor • Private Hallway with entry-phone system, airing cupboard • Open Plan Kitchen/Sitting Room with appliances including electric oven and hob, washer/dryer. fridge



- Electric Heating • Double bedroom with Fitted Wardrobes • Second single bedroom with Wardrobe Cupboard • Newly Fitted Shower Room. Heated Towel Rail • Allocated Parking Space • EPC B Council Tax Band B





TOTAL APPROX. FLOOR AREA 448 SQ.FT. (41.6 SQ.M.)

Whilst every attempt has been made to ensure the accuracy of the floor plan contained here, measurements of doors, windows, rooms and any other items are approximate and no responsibility is taken for any error, omission, or mis-statement. This plan is for illustrative purposes only and should be used as such by any prospective purchaser. The services, systems and appliances shown have not been tested and no guarantee as to their operability or efficiency can be given

Made with Metropix ©2021



Energy Efficiency Rating		
	Current	Potential
Very energy efficient - lower running costs		
(92 plus) A		
(81-91) B	83	84
(69-80) C		
(55-68) D		
(39-54) E		
(21-38) F		
(1-20) G		
Not energy efficient - higher running costs		
England & Wales		EU Directive 2002/91/EC

Agents Note: Whilst every care has been taken to prepare these particulars, they are for guidance purposes only. All measurements are approximate and are for general guidance purposes only and whilst every care has been taken to ensure their accuracy, they should not be relied upon and potential buyers/tenants are advised to recheck the measurements

Trueman Letting Company Lettings 01252 711227
5a Castle Street
Farnham
Surrey
GU9 7HR
lettings@tlc-farnham.co.uk
www.tlc-farnham.co.uk

