



## MOWBRAY ROAD, NW6

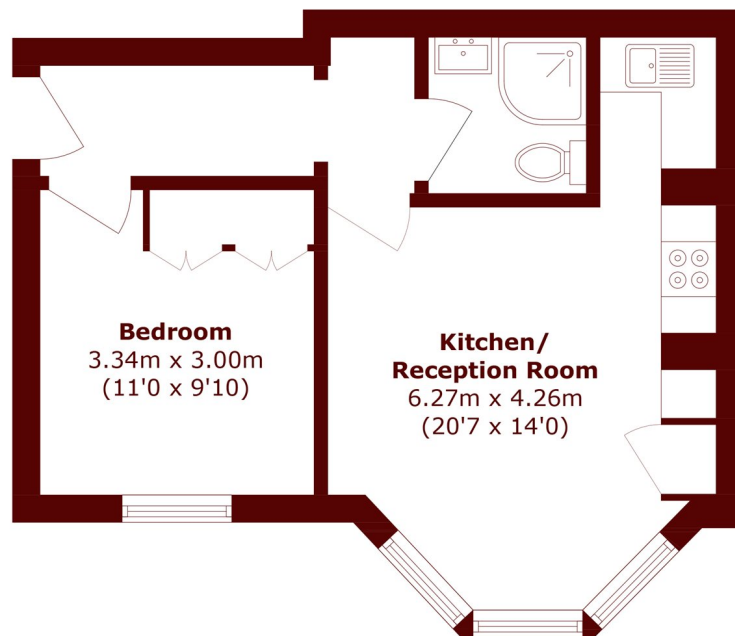
£400,000

Beautiful One-Bedroom Period Conversion with Shared Garden  
Mowbray Road, NW6. Offered to the market is this bright and spacious one-bedroom period conversion situated on the raised ground floor of an

Share of freehold  
One bedroom  
Reception

Period conversion  
Close To Kilburn & Queens Park  
Station

# STEP INSIDE MOWBRAY ROAD



Total area (approx.): 39.1 sq. m (420.9 sq. ft)

**Willesden Green**  
020 8451 0420

Energy Rating: We aim to make our particulars both accurate and reliable. However, they are not guaranteed; nor do they form part of an offer or contract. If you require clarification on any points then please contact us, especially if you're traveling some distance to view. Please note that appliances and heating systems have not been tested and therefore no warranties can be given as to their good working order

**MARSH &  
PARSONS**