



# DORSET COURT, W1U

£1,975,000

Three bedrooms  
Two bathrooms  
Reception room  
Kitchen  
Third floor (with lift)  
Baker street station

@marshandparsons  
marshandparsons.co.uk

MARSH &  
PARSONS



# ABOUT THE PROPERTY

Perched on the third floor of this small, well-kept block is this three bedroom, two bathroom flat that features a wonderful south facing vista and a small balcony. Found in good condition throughout flats in this location come to the market very rarely.

The famous Marylebone High Street is literally moments away and Baker Street Underground with its fantastic transport connections is two minutes' walk away.

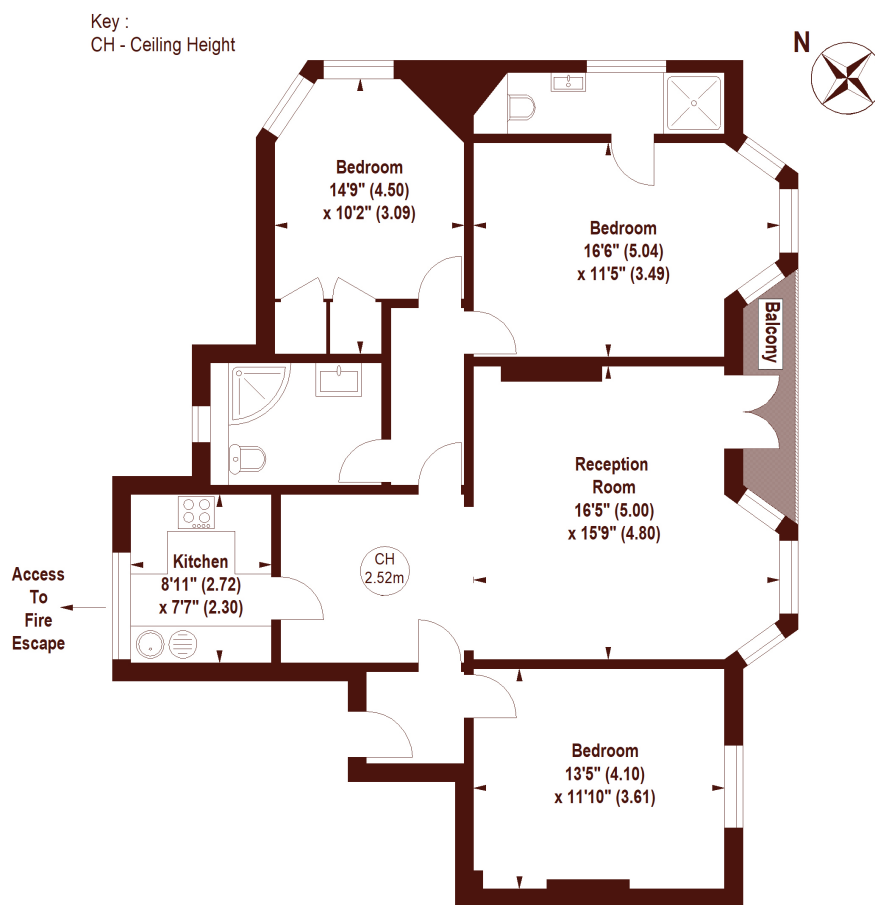
Transport links are exceptional with Baker Street underground station (Hammersmith and City, Bakerloo, Metropolitan, Circle and Jubilee lines) and Marylebone station (National Rail and Bakerloo line) within easy reach.



# STEP INSIDE DORSET COURT

## Dorset Court, Dorset Street, W1U

APPROX. GROSS INTERNAL FLOOR AREA 1065 SQFT / 99.87 SQM



### THIRD FLOOR

Not to scale, for guidance only and must not be relied upon as a statement of fact.  
All measurements and areas are approximate only

Marylebone & Mayfair  
020 7935 1775

Energy Rating: C We aim to make our particulars both accurate and reliable. However, they are not guaranteed; nor do they form part of an offer or contract. If you require clarification on any points then please contact us, especially if you're traveling some distance to view. Please note that appliances and heating systems have not been tested and therefore no warranties can be given as to their good working order

MARSH &  
PARSONS