



Dairyman Close, NW2

£375,000

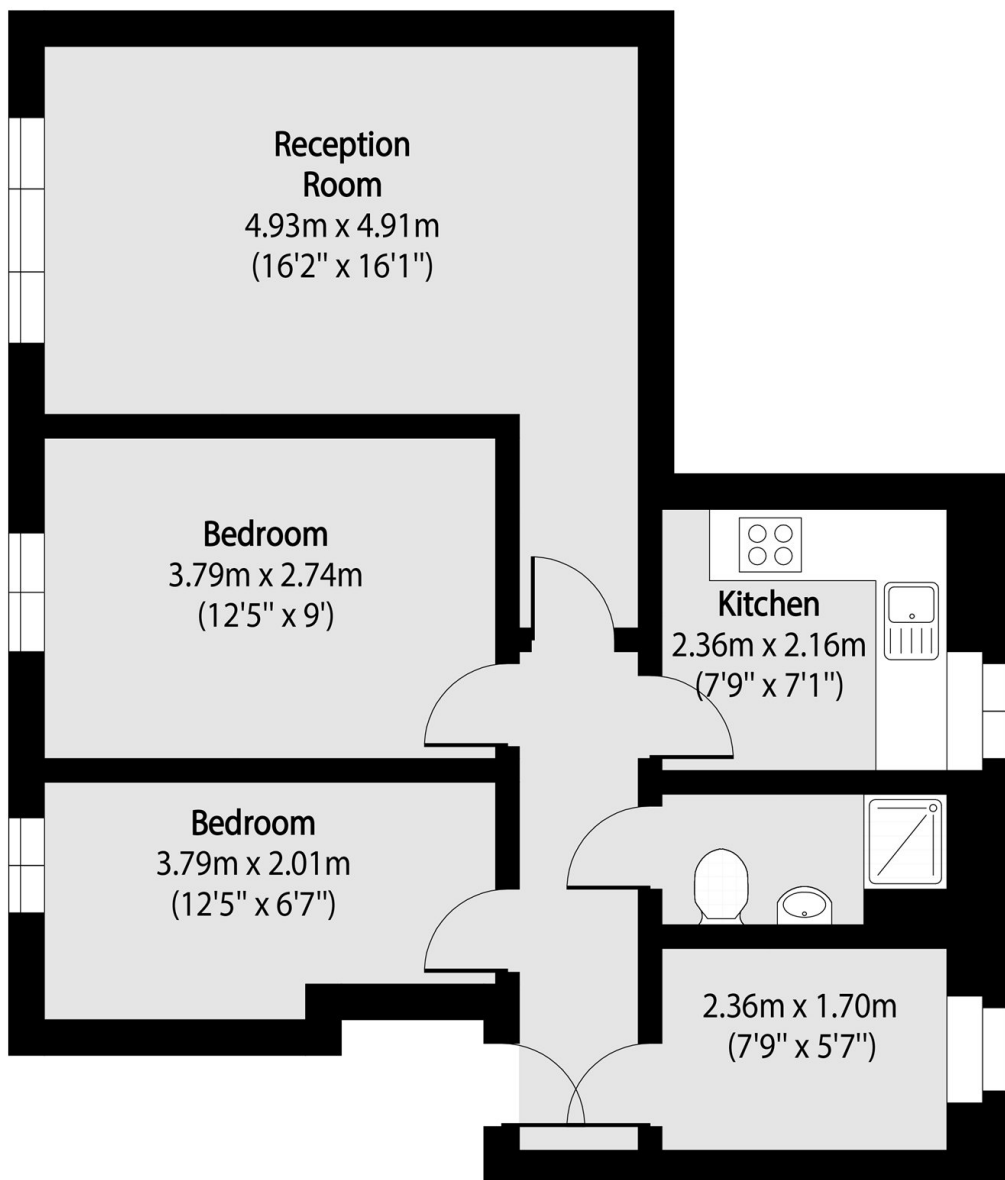
A well-presented two bedroom top-floor apartment set within a gated development, ideal for first-time buyers or investors. The property features a spacious reception room, a separate kitchen, and a bathroom. It also benefits from a share of freehold and is offered with no onward chain.

Dairyman Close is situated within a short distance of Cricklewood Broadway and Cricklewood station (Thameslink), with multiple shopping, transport and restaurant amenities to hand.

Features

- Two Bedrooms
- Large Reception Room
- Separate Kitchen
- Share Of Freehold
- Chain Free
- Gated Parking

Dairyman Close, London, NW2



Total area (approx): 55.60 sq m (598 sq. ft)