



Randolph Court

221 Randolph Avenue, W9

£3,500 per month
(£807.69 per week)

SHORT LET This spacious two double bedroom apartment is situated on the third floor within this stunning period conversion.

CHESTERTONS



Randolph Court

221 Randolph Avenue, W9

- Smart Red Brick Block
- Two Spacious Bedrooms & Modern Bathroom
- Large Reception With Wooden Floors & Integrated Kitchen
- Close To Maida Vale Station

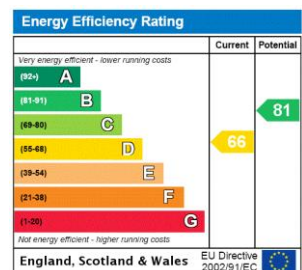


This spacious two double bedroom apartment is situated on the third floor within this stunning period conversion. The property comprise; spacious reception room, separate modern kitchen, two large double bedrooms and family bathroom.

This stunning apartment further benefits; wooden flooring, private balcony, spacious accommodation and an abundance of natural light.

The property is within close proximity to Maida Vale station and Paddington Recreation Ground.

Minimum Term: 1 months
Deposit Required: 4 weeks (subject to tenancy length)
Local Authority: Westminster
Council Tax Band: E
EPC Rating: D

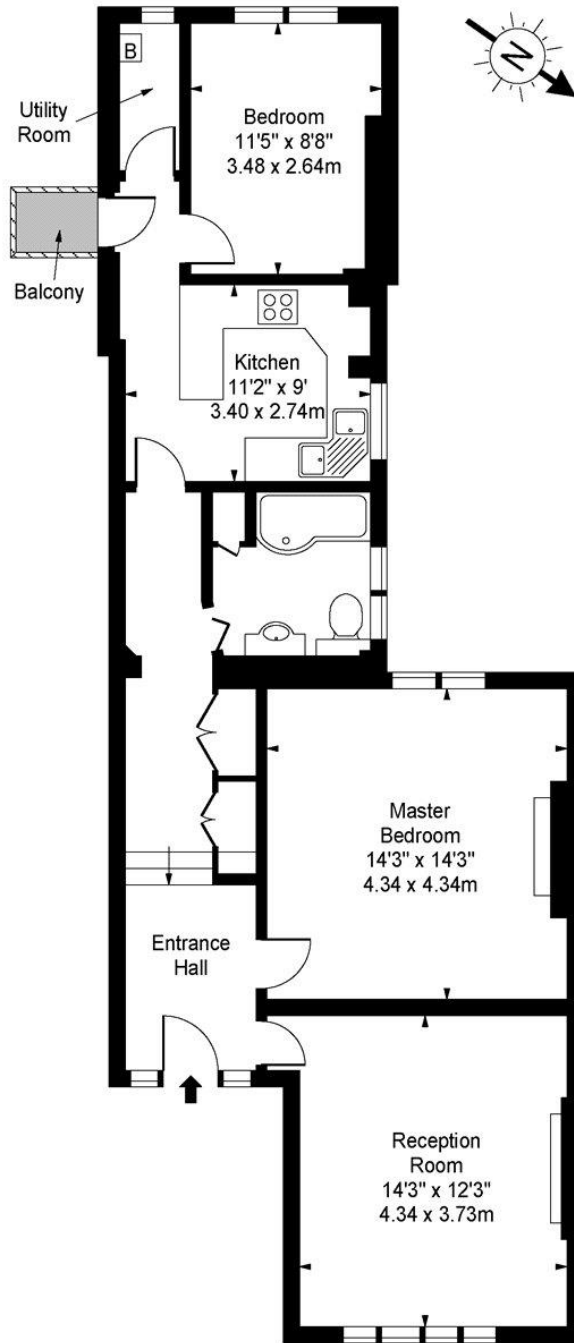


Chestertons Little Venice Lettings

26 Clifton Road
 Maida Vale
 London
 W9 1SX
 littlevenicelettingsusers@chestertons.co.uk
 02072662369
 chestertons.co.uk

Additional tenant charges apply (fees apply to non-AST tenancies only)
 Tenancy Agreement Fee: £300
 References per Tenant/Guarantor: £60
 Inventory check (approx. £100 – £250 inc. VAT)
chestertons.co.uk/property-to-rent/applicable-fees

**Randolph Court,
Randolph Avenue, W9**



Second Floor

Approx Gross Internal Area 845 Sq Ft - 78.50 Sq M

For Illustration Purposes Only - Not To Scale

www.goldlens.co.uk

Ref. No. 004462M

