



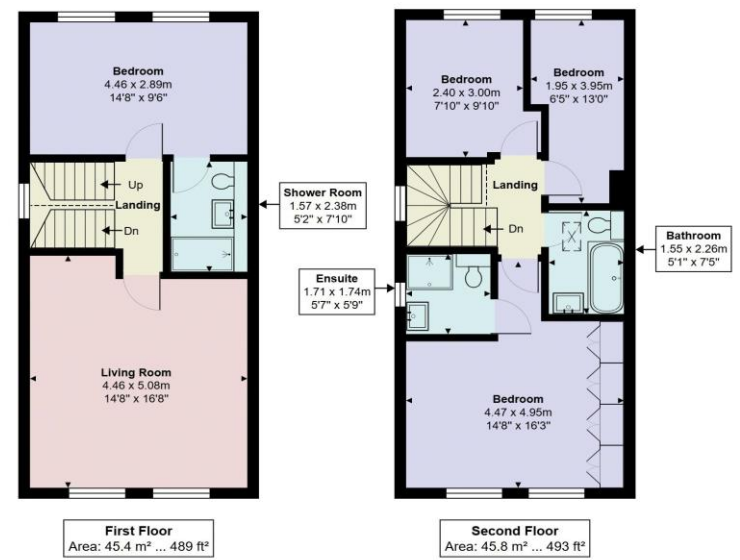
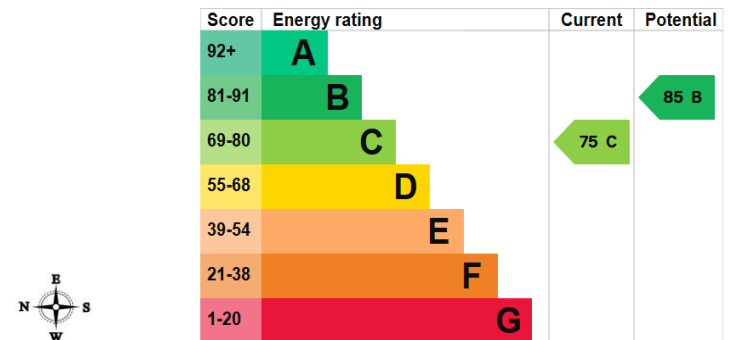
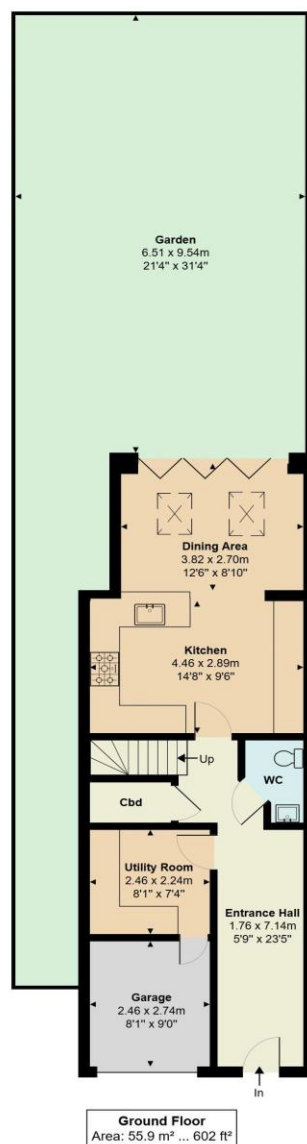
Tolmers Road, Cuffley



- BEAUTIFULLY PRESENTED FOUR BEDROOM END OF TERRACE FAMILY HOME
- PRIME LOCATION CLOSE TO MAINLINE TRAIN STATION, SHOPS AND WELL-REGARDED SCHOOLS
- ARRANGED OVER THREE SPACIOUS LEVELS
- STUNNING OPEN PLAN CONTEMPORARY KITCHEN AND DINING AREA
- OFF STREET PARKING
- PRIVATE REAR GARDEN OVER 30 FEET WITH ARTIFICIAL LAWN AND PATIO AREA

**Tolmers Road**  
Cuffley EN6 4LA

This beautifully presented four bedroom end of terrace home enjoys a prime position, perfectly placed for easy access to local amenities including the mainline train station, shops and well regarded schools. Arranged over three spacious levels, it offers flexible, well designed accommodation ideal for modern family living. At the heart of the home is a stunning open plan contemporary kitchen and dining area, enhanced by skylights that flood the space with natural light. This impressive area is perfect for everyday family life as well as entertaining. The ground floor also benefits from a separate utility room and a convenient WC, adding to the property's practicality. The first floor features a generous living room, an inviting space for relaxation and social gatherings, alongside a large double bedroom complete with its own ensuite. The second floor hosts three further bedrooms, including the main bedroom with its own ensuite, as well as a modern family bathroom, providing excellent convenience for larger households. Outside, a private and attractive rear garden, laid predominantly to low maintenance artificial lawn and complemented by a patio area ideal for outdoor dining. There is also side access via a gated pathway, offering easy entry to the garden. To the front, a driveway provides off street parking and access to the remainder of the garage. Thoughtfully designed and meticulously maintained, this impressive home combines style, functionality and convenience, making it an ideal choice for buyers seeking contemporary family living in a sought after location.



**Tolmers Road, Cuffley, EN6 4JF**  
Total Area: 147.1 m<sup>2</sup> ... 1584 ft<sup>2</sup> (excluding garden)  
All measurements are approximate and for display purposes only