



Seymour Place, W1H

£995 Per week

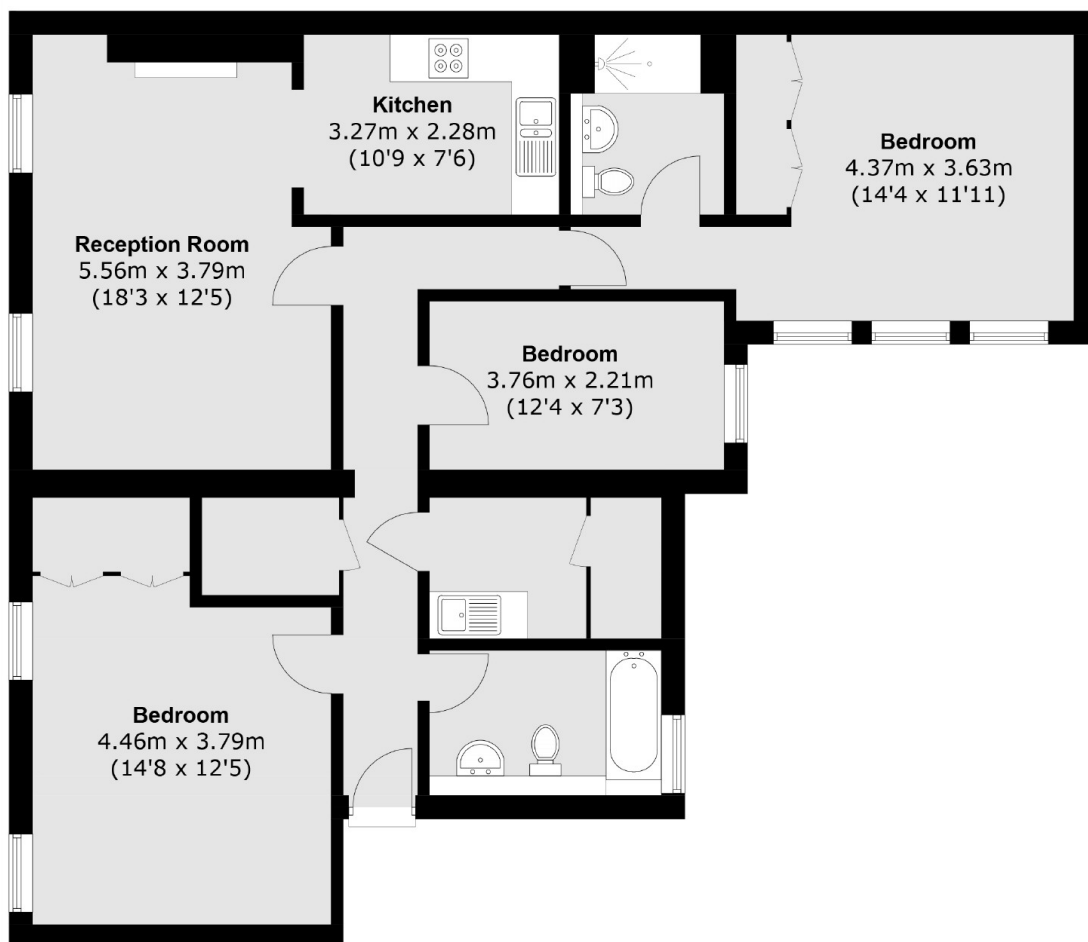
A well-presented apartment on the first floor of this attractive period building in the heart of Portman Village. The flat has a kitchen/reception room, three bedrooms with built-in storage to two of the rooms, and two bathrooms.

Seymour Place is in the heart of Portman Village which is home to an array of boutique and independent shops, bars, cafes and restaurants, providing a village vibe in the heart of central London.

Features

First Floor Flat
Three Bedrooms
Two Bathrooms
Large Reception
Unfurnished
The Portman Estate

Seymour Place, London, W1H



Total area (approx.): 101.8 sq. m (1096.3 sq. ft)