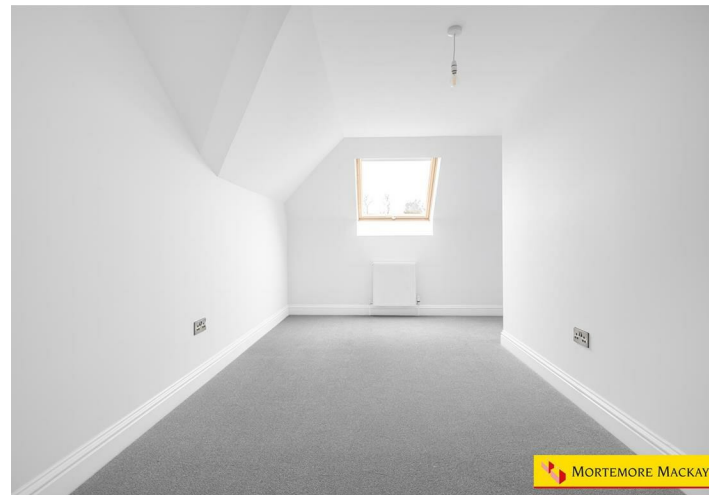


NEWSHOLME DRIVE, N21 1TW

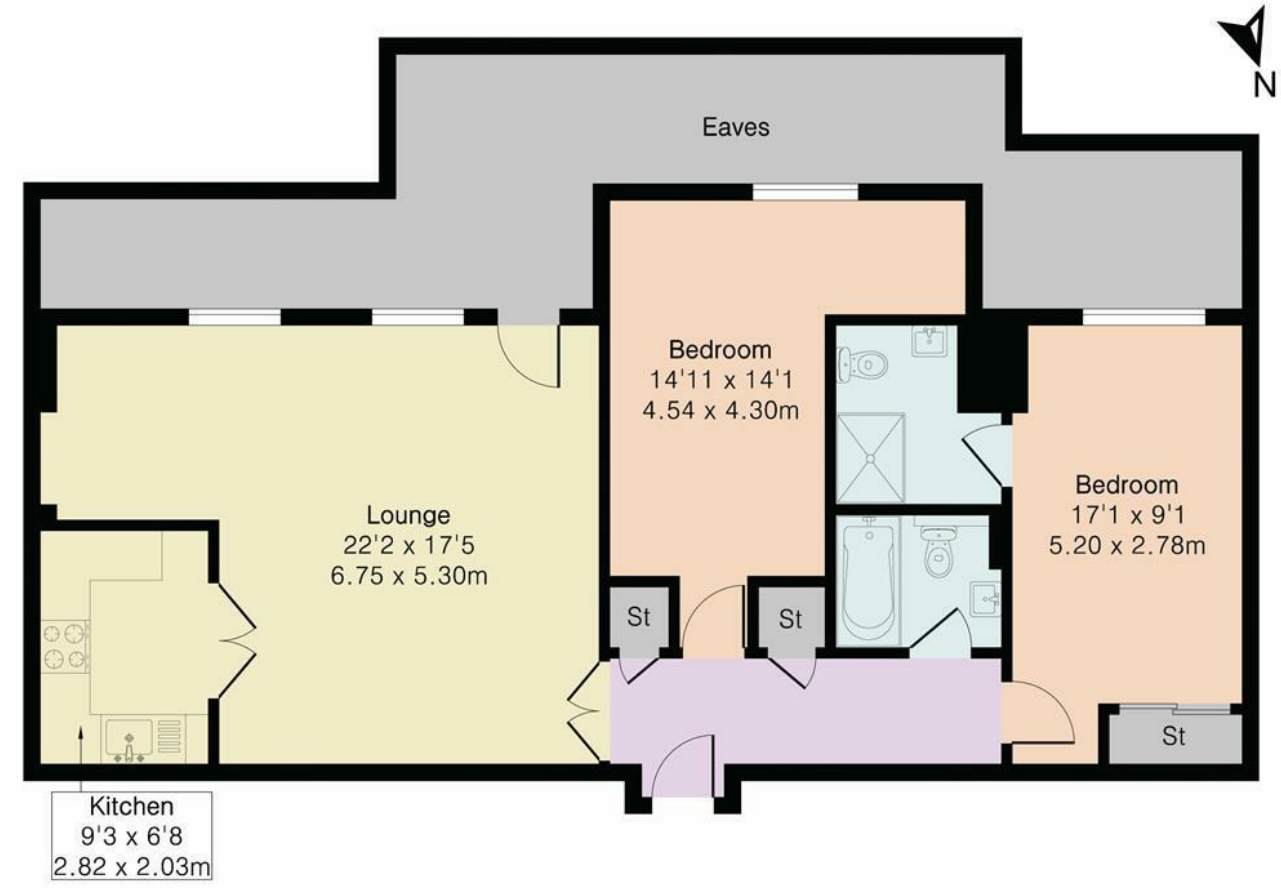


£1,900 Per month

- TOP FLOOR
- LOUNGE
- FAMILY BATHROOM
- SEPARATE WC
- 2 PARKING SPACES
- COMPLETELY REFURBISHED
- 2 BEDROOMS
- ENSUITE BATHROOM
- LOFT SPACE
- EAVES STORAGE



Approximate Gross Internal Area 903 sq ft - 84 sq m



Second Floor



Floor plan produced in accordance with RICS Property Measurement 2nd Edition. Although Pink Plan Ltd ensures the highest level of accuracy, measurements of doors, windows and rooms are approximate and no responsibility is taken for error, omission or misstatement. These plans are for representation purposes only and no guarantee is given on the total square footage of the property within this plan. The figure icon is for initial guidance only and should not be relied on as a basis of valuation.



Energy Efficiency Rating		
	Current	Potential
Very energy efficient - lower running costs		
(92 plus) A		
(81-91) B		
(69-80) C	80	80
(55-68) D		
(39-54) E		
(21-38) F		
(1-20) G		
Not energy efficient - higher running costs		
England & Wales	EU Directive 2002/91/EC	