



## Holland Road, W14

£735,000

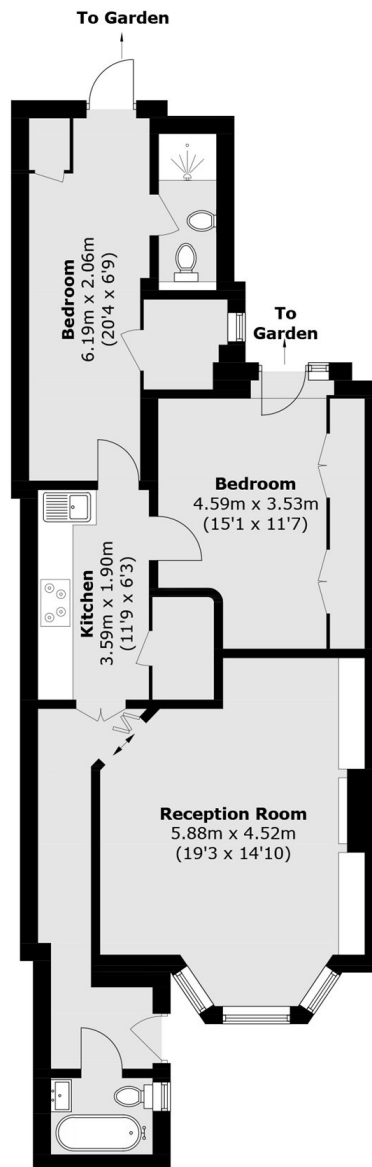
A beautiful two-bedroom apartment set within a Victorian conversion, offering generous living and entertaining space. Features include a large private garden and excellent scope to extend (STPP), making it an ideal home with character and potential.

Holland Road is situated within the Royal Borough of Kensington & Chelsea, to the west of Holland Park. The flat is close to Kensington Olympia and Shepherds Bush.

### Features

- Large Private Garden
- Share Of Freehold
- Vault Storage
- No Onward Chain
- Residents Parking
- Westfields Shopping Centre

Holland Road,  
London, W14



**Basement**

Total area (approx.): 77.1 sq. m (829.9 sq. ft)